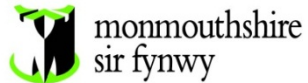


Public Document Pack



Neuadd Y Sir
Y Rhadyr
Brynbuga
NP15 1GA

Dydd Mawrth, 15 Hydref 2019

Annwyl Cyngorydd

PENDERFYNIADIAU AELOD CABINET UNIGOL

Hysbysir drwy hyn y caiff y penderfyniadau dilynol a wnaed gan aelod o'r cabinet eu gwneud **Dydd Mercher, 23ain Hydref, 2019,**.

AGENDA

1. MONLIFE - RHESYMOLI CASGLIADAU'R GWASANAETH AMGUEDDFEYDD

CABINET MEMBER: COUNTY COUNCILLOR P JORDAN

AUTHOR: Rachael Rogers, Museums Manager

CONTACT DETAILS: Tel: 01873 854282
rachaelrogers@monmouthshire.gov.uk

2. YMATEB YR YMGYNGHORIAD I FFRAMWAITH DATBLYGU CENEDLAETHOL DRAFFT LLYW

CABINET MEMBER: COUNTY COUNCILLOR R. GREENLAND

AUTHOR: MARK HAND – HEAD OF PLACEMAKING, HOUSING
AND FLOOD

CONTACT DETAILS: Tel: 07773478579
markhand@monmouthshire.gov.uk

Yr eiddwch yn gywir,

Paul Matthews
Prif Weithredwr

PORTFFOLIOS CABINET

Cynghorydd Sir	Maes Cyfrifoldeb	Gwaith Partneriaeth ac Allanol	Ward
P.A. Fox (Arweinydd)	Strategaeth a Chyfeiriad Awdurdod Cyfan CCR Cyd Gabinet a Datblygu Rhanbarthol; Trosolwg Sefydliad; Gweithio Rhanbarthol; Cysylltiadau Llywodraeth; Bwrdd Gwasanaethau Cyhoeddus; WLGA	Cyngor WLGA WLGA Bwrdd Cydlynu Gwasanaethau Cyhoeddus	Porthysgewin
R.J.W. Greenland (Dirprwy Arweinydd)	Menter Cynllunio Defnydd Tir; Datblygu Economaidd; Twristiaeth; Rheoli Datblygu; Rheoli Adeiladu; Tai a Digartrefedd; Hamdden; Ieuenctid; Addysg Oedolion; Addysg Awyr Agored; Hybiau Cymunedol; Gwasanaethau Diwylliannol	Cyngor WLGA Twristiaeth Rhanbarth y Brifddinas	Devauden
P. Jordan	Llywodraethiant Cefnogaeth y Cyngor a Phenderfyniadau Gweithrediaeth; Craffu; Safonau Pwyllgor Rheoleiddiol; Llywodraethiant Cymunedol; Cefnogaeth Aelodaeth; Etholiadau; Hyrwyddo Democratiaeth ac Ymgysylltu: Y Gyfraith; Moeseg a Safonau; Perfformiad Awdurdod Cyfan; Cynllunio a Gwerthuso Gwasanaeth Awdurdod Cyfan; Cydlynu Corff Rheoleiddiol		Cantref
R. John	Plant a Phobl Ifanc Safonau Ysgolion; Gwella Ysgolion; Llywodraethiant Ysgolion; Trosolwg EAS; Blynyddoedd Cynnar; Anghenion Dysgu Ychwanegol; Cynhwysiant; Cwricwlwm Estynedig; Derbyniadau; Dalgylchoedd; Cynnig Ôl-16; Cydlynu gyda Choleg Gwent.	Cyd Grŵp Addysg (EAS) CBAC	Llanfihangel Troddi
P. Jones	Gofal Cymdeithasol, Diogelu ac Iechyd Plant; Oedolion; Maethu a Mabwysiadu; Gwasanaeth Troseddu Ieuenctid; Cefnogi Pobl; Diogelu Awdurdod Cyfan (Plant ac Oedolion); Anableddau; Iechyd Meddwl; Iechyd Cyhoeddus; Cydlynu Iechyd.		Rhaglan
P. Murphy	Adnoddau Cyllid; Technoleg Gwybodaeth (SRS); Adnoddau Dynol; Hyfforddiant; Iechyd a Diogelwch; Cynllunio Argyfwng; Caffaeliad; Archwilio; Tir ac Adeiladau (yn cynnwys Stadau, Mynwentydd, Rhandiroedd, Ffermydd); Cynnal a Chadw Eiddo; Swyddfa Ddigidol; Swyddfa Fasnachol	Consortiwm Prynu Prosiect Gwyrdd Cymru	Caerwent

S.B. Jones	Gweithrediadau Sir Cynnal a Chadw Priffyrdd, Rheoli Trafnidiaeth, Traffig a Rhwydwaith, Rheolaeth Stad; Gwastraff yn cynnwys Ailgylchu; Cyfleusterau Cyhoeddus; Meysydd Parcio; Parciau a Gofodau Agored; Glanhau; Cefn Gwlad; Tirluniau a Bioamrywiaeth; Risg Llifogydd.	SEWTA Prosiect Gwyrdd	Goetre Fawr
S. Jones	Cyfiawnder Cymdeithasol a Datblygu Cymunedol Ymgysylltu â'r Gymuned; Amddifadedd ar Arwahanrwydd; Diogelwch y Gymuned; Cydlyniaeth Gymdeithasol; Tlodi; Cydraddoldeb; Amrywiaeth; Y Gymraeg; Cysylltiadau Cyhoeddus; Safonau Masnach; Iechyd yr Amgylchedd; Trwyddedu; Cyfathrebu		Llanofer

Nodau a Gwerthoedd Cyngor Sir Fynwy

Ein diben

Adeiladu Cymunedau Cynaliadwy a Chydnerth

Amcanion y gweithiwn tuag atynt

- Rhoi'r dechrau gorau posibl mewn bywyd i bobl
- Sir lewyrchus a chysylltiedig
- Cynyddu i'r eithaf botensial yr amgylchedd naturiol ac adeiledig
- Llesiant gydol oes
- Cyngor gyda ffocws ar y dyfodol

Ein Gwerthoedd

Bod yn agored. Rydym yn agored ac yn onest. Mae pobl yn cael cyfle i gymryd rhan mewn penderfyniadau sy'n effeithio arnynt, dweud beth sy'n bwysig iddynt a gwneud pethau drostynt eu hunain/eu cymunedau. Os na allwn wneud rhywbeth i helpu, byddwn yn dweud hynny; os bydd yn cymryd peth amser i gael yr ateb, byddwn yn esbonio pam; os na allwn ateb yn syth, byddwn yn ceisio eich cysylltu gyda'r bobl a all helpu - mae adeiladu ymddiriedaeth ac ymgysylltu yn sylfaen allweddol.

Tegwch. Darparwn gyfleoedd teg, i helpu pobl a chymunedau i ffynnu. Os nad yw rhywbeth yn ymddangos yn deg, byddwn yn gwrando ac yn esbonio pam. Byddwn bob amser yn ceisio trin pawb yn deg ac yn gyson. Ni allwn wneud pawb yn hapus bob amser, ond byddwn yn ymrwymo i wrando ac esbonio pam y gwnaethom weithredu fel y gwnaethom.

Hyblygrwydd. Byddwn yn parhau i newid a bod yn hyblyg i alluogi cyflwyno'r gwasanaethau mwyaf effeithlon ac effeithiol. Mae hyn yn golygu ymrwymiad gwirioneddol i weithio gyda phawb i groesawu ffyrdd newydd o weithio.

Gwaith Tîm. Byddwn yn gweithio gyda chi a'n partneriaid i gefnogi ac ysbrydoli pawb i gymryd rhan fel y gallwn gyflawni pethau gwych gyda'n gilydd. Nid ydym yn gweld ein hunain fel 'trefnwyr' neu ddatrys-wyr problemau, ond gwnawn y gorau o syniadau, asedau ac adnoddau sydd ar gael i wneud yn siŵr ein bod yn gwneud y pethau sy'n cael yr effaith mwyaf cadarnhaol ar ein pobl a lleoedd.

SUBJECT: MonLife – Museum Service Collections Rationalisation

MEETING: Individual Cabinet Member Decision – Cllr Paul Jordan

DATE: 23rd October 2019

DIVISION/WARDS AFFECTED: Not Applicable

1. PURPOSE:

To approve the deaccessing and disposal of selected items from the collections of Monmouthshire Museums to ensure:

- Everything we have in the collections relates to our Collections Development Policy.
- We know the broad themes of our collections
- We are more informed of our future storage needs
- We know where artefacts that need accessioning are and the size of the task

2. RECOMMENDATIONS:

1. To agree the deaccessioning of and disposal actions for the proposed items in line with Section 4 of the Museums Association Disposal Toolkit. (List can be seen in Appendix 2).
2. To note this forms the second of a series. Further lists for items will be identified for disposal as we are able to make recommendations.

3. KEY ISSUES:

- 3.1 Accredited museums act within an agreed legal and ethical framework and have approved policies for developing their collections. This ensures that the public continue to have access to public collections – and that they continue to trust museums as responsible long-term guardians. Collections review, rationalisation and disposal are part of responsible collections management.
- 3.2 Accessioning is the process of formally recording that the governing body has taken legal ownership of objects and has committed to care for them over the long term. Deaccessioning is the formal decision by a governing body to take objects out of its accessioned collection and managing the disposal of those objects through an agreed method.
- 3.3 Collections rationalisation is a procedure whereby a museum improves its understanding of a collection so that the collection can be used more effectively for the benefit of its users. The need to rationalise a collection is driven by many different factors, and may include

uncontrolled collecting in the past, increasing pressures on storage space or the need to meet organisational priorities.

- 3.4 Controlled rationalisation enables museums to develop a systematic and strategic approach to effective management and increased use of their collections, allowing them to maximise resources, refocus collecting activity and increase public access. Although one clear outcome of a programme of rationalisation can lead to deaccessioning and the disposal of objects, rationalisation can also provide ways of considering new and different uses for collections.
- 3.5 The Accreditation Scheme for museums and galleries in the UK encourages museums to consider rationalisation as a way to address collections management issues facing museums and make collections accessible to visitors and users. A museum's approach to rationalisation will be articulated in its Collections Development Policy which will include detail on the museum's themes and priorities for collections.
- 3.6 There are many benefits to collections rationalisation:
- Ensuring that collections are relevant to the museum's vision and strategic objectives which may have evolved over time with historic collections now not fit for the current purpose of the museum
 - Developing a clearer understanding of the collections the museum holds
 - Determining the significance of objects in a collection
 - Enabling effective collections development, including contemporary collecting
 - Maximising resources – storage space, staffing and running costs, to care effectively for collections
 - Developing priorities for collections care
 - Improving storage and management of reserve collections
 - Focusing collections, so that they are of high quality and relevant to users and stakeholders
 - Providing increased access to collections
 - Using collections within the museum and with partners in different ways
 - Enhancing knowledge and information about collections and improving documentation

Please note these principals are taken from guidance documents published by Collections Trust (the UK body for museum documentation standards) and Arts Council England (the body that oversees Accreditation - the Museum Standard across the UK)

- 3.7 Managing the disposal of objects needs to be done both ethically and in response to organisational strategy. Rationalising a collection is a lengthy process; items need to be assessed, and if they are no longer relevant to the museum, where they go next needs to be assessed.

Section 4 of the Museums Association Disposal Toolkit provides full detail of acceptable methods of disposal. In brief these are:

- Transfer to an Accredited Museum
- Exchange of items between museums
- Transfer to another institution/organisation within the public domain
- Return to donor

- Sale to an accredited museum
- Transfer outside the public domain
- Sale outside the public domain
- Recycling of an item
- Destruction of an item

(In most instances the procedures would be followed in the order set out above, ie Transfer to Accredited Museum being the first procedure and destruction of an item being the last)

The following should be of key consideration when selecting a method of disposal:

- there is a strong presumption for keeping items within the public domain
- there is a strong preference for free gift or transfer to other accredited museums and items should be offered to them in the first instance
- action should be taken that ensure continued public trust in museums.

3.8 There may be a negative impact of antipathy and distrust of the service by people who thought items would be looked after in perpetuity. We will carry out the following procedures to mitigate this risk:

- Follow Museum Ethical Guidelines at all times.
- We will provide updates on the process to ensure that members of the public are aware of what we are doing at all times.
- We will keep relevant organisations up to date including MALD the body responsible for museums in Wales.
- We will keep any bodies that have provided funding towards the purchase or conservation of objects updated and consult with them at relevant stages.

4. EQUALITY AND FUTURE GENERATIONS EVALUATION (INCLUDES SOCIAL JUSTICE, SAFEGUARDING AND CORPORATE PARENTING):

4.1 The work of the Museum Service holds the wellbeing of our Future Generations at its very heart. It is well documented that participation in cultural life improves people's wellbeing and this is something considered throughout the service's work. Collections rationalisation ensures that resources are being targeted appropriately, we are caring for our collections appropriately and the artefacts we care for are telling the stories of our communities. If the method of disposal chosen is to transfer an item to another community then those communities also benefit by being able to tell their stories better.

5. OPTIONS APPRAISAL

5.1 Carrying out collections rationalisation will enable us to manage our collections better to the benefit of our communities.

5.2 Working through our collections in a systematic way will enable this work to be carried out in a timely manner. The list associated with this report contains all boxed items from the

off site store relating to Social History, which we are recommending for deaccession and disposal. There are 276 objects.

- 5.3. This list represents the boxed items from the off site store that relate to Social History. All of these items have been assessed and a recommendation to keep or dispose has been made for most, their remain some where further reseach is required. For this stage we assessed 585 objects, of which 276 have been identified for disposal and feature on this list. There are a further 61 items identified for disposal but confirmation is required through record checking. This will form List 3 and will be brought for decision in due course. There are then a further 41 initially identified for disposal but require deeper research. Boxed items relating to archaeology and natural history still require assessment. Of the large and unboxed objects remaining there are a further 38 objects that we have scored for deaccessioning and disposal but we need to do some further research work before we can fully recommend they are disposed of. There are also a further 150 objects in the large and unboxed category which are still waiting a decision, for which we have recognised that we require more expert advice. Further lists will be brought for decision when these processes have been carried out.
- 5.4 Items not from our off site store will form part of the bid submitted to the National Lottery Heritage Fund and will be dealt with under this process during 2020 and 2021.

6.2 EVALUATION CRITERIA

We have referred to industry standards and best practice throughout and have consulted the following documents to help inform the review:

- Spectrum 5.0 (The UK Museums' Collection Management Standard) 'Collections Review' and 'Deaccessioning and disposal' chapters
- Museums Association Disposal Toolkit
- University College London Collections Review Toolkit (https://www.ucl.ac.uk/culture/sites/culture/files/cr_toolkit_final.pdf)
- Collections Trust : A guide to selecting a review methodology for collections rationalisation
- CyMal (2013) why do we have it- A significance process and template (CyMAL is the predecessor to MALD: Museums Archives and Libraries Wales – Welsh Government)
- South East Museum Development Programme: A guide to Collections Review and Rationalisation.
- SHARE Museums East: Collections Rationalisation: Planning for action

7. REASONS:

Like many museums across the UK, the stores housing Monmouthshire Museum Collections are reaching full capacity. In 2017 we carried out a study during which the percentage fullness of each item of shelving/cupboard was visually estimated. The mean fullness of shelving/cupboard housing the collections is 86% demonstrating that the space available for future collecting is very limited and there is little space for the collections to grow and remain relevant. There is also the issue of overcrowding with many of the collections stored on the floor. In addition the volume of Non Accessioned objects across the whole of the Museums Service collections is 23%. This means 23% of collections are not catalogued or recorded making it difficult for the service to use the collections to tell their stories to members of our communities.

8. RESOURCE IMPLICATIONS:

This work can be considered in two parts:

- £4200 additional funding was allocated from our fundraising budget to carry out the initial piece of work looking at items in our off site store. This coincided with a store move, and enabled us to carry out an initial review of all items. The additional budget covered specialist help to move the collections, staff time was covered as part of normal working hours. This work has been followed up with extensive desk based research. The objects on this list represent where this task has been completed. Further lists will be submitted as the full range of items is considered. Staff time to continue this work has been allocated within existing staff roles. Some items require specialist advice before a decision is made. £2500 has been allocated from our fundraising budget to appoint experts where appropriate.
- There is a second stage of work which is much larger than this initial piece of work to look at all the items within the Museum Collections across all three sites. The resources for this have been included in a National Lottery Heritage Fund application. We are proposing the appointment of two project assistants to carry out the work full time for an 18 month period. They will be supervised by our Objects Conservator who is an existing member of staff, her hours will be increased to full time to enable her to carry out this work. These increased hours will be paid for out of the bid. If this bid is not successful we will need to consider the resource implications again.
- Please note the items we are requesting a decision for via this ICMD relate to the first part of the project and therefore resources have already been allocated.

9. CONSULTEES:

Enterprise DMT
Cabinet member for Museums
Chief Operating Officer - MonLife
MonLife Management Team
Museum Staff

10. BACKGROUND PAPERS:

Appendix 1: Equality and Future Generations Evaluation

Appendix 2: Recommendation for Disposal

Appendix 3: Monmouthshire Museums Collections' review process: April 2019

Appendix 4: Collection's Review Scoring grid

<https://www.museumsassociation.org/collections/disposal-toolkit>

<https://326gtd123dbk1xdkdm489u1q-wpengine.netdna-ssl.com/wp-content/uploads/2017/11/Deaccessioning-and-disposal.pdf>

11. AUTHOR: Rachael Rogers, Museums Manager

- 12. CONTACT DETAILS: Tel: 01873 854282**
E-mail: rachaelrogers@monmouthshire.gov.uk



Equality and Future Generations Evaluation

Name of the Officer Rachael Rogers Phone no: 01873 854282 E-mail: rachaelrogers@monmouthshire.gov.uk	Please give a brief description of the aims of the proposal To approve a recommendation from Museums Staff to dispose of selected museum artefacts via an approved Collections Rationalisation Procedure.
Name of Service area Museums	Date 31 st May 2019

Page 7

4 Are your proposals going to affect any people or groups of people with protected characteristics? Please explain the impact, the evidence you have used and any action you are taking below.

Protected Characteristics	Describe any positive impacts your proposal has on the protected characteristic	Describe any negative impacts your proposal has on the protected characteristic	What has been/will be done to mitigate any negative impacts or better contribute to positive impacts?
---------------------------	---	---	---

Protected Characteristics	Describe any positive impacts your proposal has on the protected characteristic	Describe any negative impacts your proposal has on the protected characteristic	What has been/will be done to mitigate any negative impacts or better contribute to positive impacts?
Age	Collections rationalisation will enable us to determine how we are better able to serve our audiences with protected characteristics.	There may be a negative impact on the older age group as they are the ones who may have been donors of these items. This impact may be one of antipathy and distrust of the service that they had thought was going to look after their donations in perpetuity.	Museum Ethical Guidelines will be followed at all times to ensure we remain within Museum Industry Standards at all times. We will provide full information on the process to ensure that members of the public are aware of what we are doing at all times. We will keep relevant organisations up to date including MALD the body responsible for museums in Wales. We will also prepare written statements of explanation available at each museum for custodians to hand out; provide positive press stories e.g. publicising successful 'rehomings' in other museums etc.
Disability	As above	As above	As above
Gender reassignment	As above	As above	As above
Marriage or civil partnership	As above	As above	As above
Pregnancy or maternity	As above	As above	As above
Race	As above	As above	As above
Religion or Belief	As above	As above	As above

Protected Characteristics	Describe any positive impacts your proposal has on the protected characteristic	Describe any negative impacts your proposal has on the protected characteristic	What has been/will be done to mitigate any negative impacts or better contribute to positive impacts?
Sex	As above	As above	As above
Sexual Orientation	As above	As above	As above
Welsh Language	As above	As above	As above
Poverty	As above	As above	As above


2. **Does your proposal deliver any of the well-being goals below?** Please explain the impact (positive and negative) you expect, together with suggestions of how to mitigate negative impacts or better contribute to the goal. There's no need to put something in every box if it is not relevant!




Well Being Goal	Does the proposal contribute to this goal? Describe the positive and negative impacts.	What actions have been/will be taken to mitigate any negative impacts or better contribute to positive impacts?
A prosperous Wales Efficient use of resources, skilled, educated people, generates wealth, provides jobs	Our resources are stretched and it is a better use of them to focus on collections relevant to our communities.	Carrying out the review will enable us to work out how to most effectively use our resources to enable us to contribute to a prosperous Wales through Culture.


Well Being Goal	Does the proposal contribute to this goal? Describe the positive and negative impacts.	What actions have been/will be taken to mitigate any negative impacts or better contribute to positive impacts?
A resilient Wales Maintain and enhance biodiversity and ecosystems that support resilience and can adapt to change (e.g. climate change)		
A healthier Wales People's physical and mental wellbeing is maximized and health impacts are understood	The positive effects of cultural activities on people's wellbeing is well documented. Ensuring our collections are relevant to our particular communities and our visitors will contribute towards this.	Carrying out the rationalisation will enable us to work how to most effectively use our resources to enable us to contribute to a healthier Wales through Culture
A Wales of cohesive communities Communities are attractive, viable, safe and well connected	<p>Telling the stories of all our communities through our work is important in making our communities feel connected and attractive. Ensuring our collections relate directly to our stories will enable us to do this in a more focused way.</p> <p>There may be a negative impact on communities of antipathy and distrust of the service that they had thought was going to look after donations in perpetuity.</p>	<p>Carrying out the rationalisation will enable us to work how to most effectively use our resources to enable us to contribute to a Wales of cohesive communities.</p> <p>Museum Ethical Guidelines will be followed at all times to ensure we remain within Museum Industry Standards at all times. We will provide full information on the process to ensure that members of the public are aware of what we are doing at all times. We will keep relevant organisations up to date including MALD the body responsible for museums in Wales.</p> <p>We will also prepare written statements of explanation available at each museum for custodians to hand out; provide positive press stories e.g. publicising successful 'rehomings' in other museums etc.</p>
A globally responsible Wales		

Well Being Goal	Does the proposal contribute to this goal? Describe the positive and negative impacts.	What actions have been/will be taken to mitigate any negative impacts or better contribute to positive impacts?
Taking account of impact on global well-being when considering local social, economic and environmental wellbeing		
A Wales of vibrant culture and thriving Welsh language Culture, heritage and Welsh language are promoted and protected. People are encouraged to do sport, art and recreation	Collections Rationalisation means we can focus on the appropriate culture and heritage for our area.	Carrying out the rationalization will enable us to work out how to most effectively use our resources to enable us to contribute to a Wales of vibrant culture and thriving Welsh language.
A more equal Wales People can fulfil their potential no matter what their background or circumstances		

3. How has your proposal embedded and prioritised the sustainable governance principles in its development?

Sustainable Development Principle	Does your proposal demonstrate you have met this principle? If yes, describe how. If not explain why.	Are there any additional actions to be taken to mitigate any negative impacts or better contribute to positive impacts?
 <p>Balancing short term need with long term and planning for the future</p> <p>Long Term</p>	The Museum Stores are extremely full. This work will enable us to look at the long term and to plan for the future.	

Sustainable Development Principle	Does your proposal demonstrate you have met this principle? If yes, describe how. If not explain why.	Are there any additional actions to be taken to mitigate any negative impacts or better contribute to positive impacts?
 <p>Working together with other partners to deliver objectives</p>	<p>This will involve working closely with our colleagues across museums to ensure we are following industry procedures and staying with in ethical guidelines.</p>	
 <p>Involving those with an interest and seeking their views</p>	<p>We have consulted with museum bodies and followed UK wide principals.</p>	<p>There may be a negative impact on communities of antipathy and distrust of the service that they had thought was going to look after donations in perpetuity.. Museum Ethical Guidelines will be followed at all times to ensure we remain within Museum Industry Standards at all times. We will provide full information on the process to ensure that members of the public are aware of what we are doing at all times. We will keep relevant organisations up to date including MALD the body responsible for museums in Wales.</p> <p>We will also prepare written statements of explanation available at each museum for custodians to hand out; provide positive press stories e.g. publicising successful 'rehomings' in other museums etc.</p>
 <p>Putting resources into preventing problems occurring or getting worse</p>	<p>The Museum Stores are almost at capacity and we need to address this in order to plan for the future.</p>	<p>Properly considered collections rationalization will help us to prioritise the needs of our service and ensure we can put in place the best resources to care for them.</p>

Sustainable Development Principle	Does your proposal demonstrate you have met this principle? If yes, describe how. If not explain why.	Are there any additional actions to be taken to mitigate any negative impacts or better contribute to positive impacts?
 <p>Considering impact on all wellbeing goals together and on other bodies</p>	<p>It is well documented that participation in cultural life improves peoples well being and this is something we consider throughout our work.</p>	

4. Council has agreed the need to consider the impact its decisions has on the following important responsibilities: Social Justice, Corporate Parenting and Safeguarding. Are your proposals going to affect any of these responsibilities?

Page 13

	Describe any positive impacts your proposal has	Describe any negative impacts your proposal has	What will you do/ have you done to mitigate any negative impacts or better contribute to positive impacts?
Social Justice	Our role as a museum service is to tell the stories of everyone in Monmouthshire. We would like to ensure we do this more effectively.		
Safeguarding	N/A	N/A	N/A
Corporate Parenting	N/A	N/A	N/A

5. What evidence and data has informed the development of your proposal?

- Discussion amongst Monmouthshire Museums Team
- Spectrum 5.0 'Collections Review' and 'Deaccessioning and disposal' chapters
- Museums Association Disposal Toolkit
- University College London collections review Toolkit (https://www.ucl.ac.uk/culture/sites/culture/files/cr_toolkit_final.pdf)
- Collections Trust : A guide to selecting a review methodology for collections rationalisation
- CyMal (2013) why do we have it- A significance process and Template (CYMAL = predecessor of MALD – Museums Archives and Libraries Division of Welsh Government)
- South East Museum Development Programme: A guide to Collections Review and Rationalisation.
- SHARE Museums East: Collections Rationalisation: Planning for action (SHARE = Museums Development Programme for the East of England)

6. SUMMARY: As a result of completing this form, what are the main positive and negative impacts of your proposal, how have they informed/changed the development of the proposal so far and what will you be doing in future?

The work we do in the Museums Service holds the wellbeing of our Future Generations at its very heart. It is well documented that participation in cultural life improves peoples well being and this is something we consider throughout our work. Whilst the idea of disposal can be difficult within a museum context, the Accreditation Scheme for museums and galleries in the UK encourages museums to consider rationalization as a way to address collections management issues facing museums and make collections accessible to visitors and users. This means improvements to the service in the longer term.

Page 14

7. ACTIONS: As a result of completing this form are there any further actions you will be undertaking? Please detail them below, if applicable.

What are you going to do	When are you going to do it?	Who is responsible
--------------------------	------------------------------	--------------------

8. VERSION CONTROL: The Equality and Future Generations Evaluation should be used at the earliest stage, such as informally within your service, and then further developed throughout the decision making process. It is important to keep a record of this process to demonstrate how you have considered and built in equality and future generations considerations wherever possible.

Version No.	Decision making stage	Date considered	Brief description of any amendments made following consideration
1.	Enterprise DMT (List 1)	14 th June 2019	No Change
	ICMD	10 th July 2019	No Change

	Enterprise DMT (List 2)	23 rd Sept 2019	
--	-------------------------	----------------------------	--

This page is intentionally left blank

Number	Description	Information	Reason
ABGMS : A1976.45	Mineral water bottle, green glass, Watkins & Sons.	donor and bottle from Herefordshire. Object marked "Watkins and sons" in octagon shape "crystal ", mineral waters, Hereford". "This bottle is the property of Watkins & sons, Hereford", cod bottle with marble and rubble inside.	outside our collecting area generic object does not specifically contribute to local story. Poor display and engagement potential
ABGMS : A1979.515	Glass bottle.	white glass bottle marked "Mason's essence of coffee and chicory"	generic object does not specifically contribute to local story. Poor display and engagement potential
ABGMS : A1979.518	Glass bottle.	Bottle marked: "GARTONS HP SAUCE."	generic object does not specifically contribute to local story. Poor display and engagement potential
ABGMS : A1979.522	Glass bottle. 'The Merthyr Bottling'.	Bottle marked: "Merthyr MB BOTTLING COMPANY"	generic object does not specifically contribute to local story. Poor display and engagement potential
ABGMS : A1982.404	Bottle found in Abergavenny, glass.	green glass sauce bottle	generic object does not specifically contribute to local story. Poor display and engagement potential
ABGMS : A1982.419	Bottle found in Abergavenny, glass. Beer bottle, 'Saxon & Co. Brynmawr and Birmingham', found in museum collection.	white glass bottle "ELIMAN'S ROYAL EMBRICATION FOR HORSES, MANUFACTUREY SLOUGH"	generic object does not specifically contribute to local story. Poor display and engagement potential
ABGMS : A1982.553		it has a "Saxon &co stamped" lid on top".	not in our collecting area generic object does not specifically contribute to local story. Poor display and engagement potential
ABGMS : A1982.467b	Bottle found in Abergavenny, green glass.	original copper tag label around neck which says "samur gold foil, gilbey"	generic object does not specifically contribute to local story. Poor display and engagement potential
ABGMS : A1982.467a	Bottle found in Abergavenny, green glass.		generic object does not specifically contribute to local story. Poor display and engagement potential
ABGMS : A1982.458	Bottles found in Abergavenny, green glass.	Gordon's gin bottle marked: "Gordon's special dry London gin, established London 1769".	generic object does not specifically contribute to local story. Poor display and engagement potential

ABGMS : A1982.555	Beer bottle, 'Saxon & Co. Brynmawr and Birmingham', found in museum collection.	top of bottle is marked "Saxon and co "	outside collecting Area generic object does not specifically contribute to local story. Poor display and engagement potential
ABGMS : A1982.557	Large square sauce bottle, found in museum collections.		
ABGMS : A1982.558	Rectangular sauce bottle 'Fletchers Selby, found in museum collections.	bottle marked "Fletchers Selby", a Yorkshire company	outside collecting area generic object does not specifically contribute to local story. Poor display and engagement potential
ABGMS : A1982.560	Two large round jars, white glass.	bottle marked: " Made in England" and "CTC" Bottle marked : "W.J.Mackenzie &co , Maylord Street, Hereford" lion in circle trade mark, "kilner brother", stopper inside	
T1700	White glass bottle, 'M.J. Mackenzie & Co.'.		outside collecting area
T1701	Green glass bottle, 'L. Richards Blaenavon'.	bottle marked 'L. Richards Blaenavon'	outside collecting area generic object does not specifically contribute to local story. Poor display and engagement potential
ABGMS : A1966.1	Bottle, 4-sided, green glass.	green glass, square in shape, 4inches high	generic object does not specifically contribute to local story. Poor display and engagement potential
ABGMS : A1979.520	White glass bottle.	Bottle has glass stopper	generic object does not specifically contribute to local story. Poor display and engagement potential
ABGMS : A1982.444	Bottle / jar found in Abergavenny, glass.	Bottle marked "Edward Pink and sons, London".	generic object does not specifically contribute to local story. Poor display and engagement potential
ABGMS : A1982.446	Bottle found in Abergavenny, glass.		generic object does not specifically contribute to local story. Poor display and engagement potential
A1982.452	bottle, walkers whisky	bottle marked: "walker's Kilmarnock whiskey 6A7"	generic object does not specifically contribute to local story. Poor display and engagement potential
ABGMS : A1982.454	Jar found in Abergavenny, brown glass.	bottle marked: "16 oz., Bovril ltd" "bottle made in England"	contribute to local story. Poor display and engagement potential

ABGMS : A1982.552	Beer bottle, 'Saxon & Co. Brynmawr & Birmingham', found in museum collection.	bottle marked "saxon &co."	outside local area
ABGMS : A1982.554	Beer bottle, 'Saxon & Co. Brynmawr & Birmingham', found in museum collection.	bottle marked "Saxon and co" and top marked "brains"	outside local area
T1484	Mole trap; earthenware jar probably made at Ewenny or Rummney potteries.	made at Ewenny or Rummney potteries used in Powys	outside collecting area.
ABGMS : A1982.694	Whip holder, brass.		no local significance and incomplete no local significance, no display or engagement potential, poor condition
ABGMS : A1982.696	One leather blinker plate. Leather strap, horse related, with buckles and rings attached to each side.		no local significance, no display or engagement potential, poor condition
T1499			no local significance, no display or engagement potential, poor condition
T1500	Bit, twisted.	This object is a handle not a bit	no local significance, no display or engagement potential, poor condition
T1501	Spiral covered in fabric, horse related.		no local significance, no display or engagement potential, poor condition
T1503	Plastic bag with very corroded hooks.	8 small hand forged iron hooks. Corroded	no local significance, no display or engagement potential, poor condition
T1504	Leather strap, horse related.	incomplete piece of strap box contains 9 brackets and 1 hinge, fragment of ceramic, 4 metal strips and other associated hardware	no local significance, no display or engagement potential, poor condition
T1506	Wooden box with mainly hinges. Jug, earthenware, copper lustre glaze, blue design, chipped spout.		no local significance, no display or engagement potential, poor condition
ABGMS : A0.43.2	Jug, commemorative, male figure with orange jacket and black hat.		no local significance
ABGMS : A1968.11.3		toby jug	out of collection area generic object does not specifically contribute to local story. Poor display and engagement potential
ABGMS : A1978.582.1	Jar.	bottom of jar marked with "[image] lighthouse"	generic object does not specifically contribute to local story. Poor display and engagement potential
T1507	Earthenware pot.	M: no info	engagement potential

ABGMS : A0.573	Large mineral water bottle, white glass.	bottle marked: 'Gwyddon vale mineral water co, Abercarn',	outside collecting area generic object does not specifically contribute to local story. Poor display and engagement potential
ABGMS : A1977.85	White jar, Cooperative Society mark on base.	jar marked: "cooperative whole sale society LTD"	
ABGMS : A1978.619	Pale green glass bottle, 'Saxon & Co., Chapel Street, Brynmawr'.	bottle marked: "Saxon & Co., Chapel Street, Brynmawr"	outside collecting area generic object does not specifically contribute to local story. Poor display and engagement potential
ABGMS : A1982.429	Bottle found in Abergavenny.		generic object does not specifically contribute to local story.
ABGMS : A1982.465	Glass bottle found in Abergavenny.		generic object does not specifically contribute to local story.
ABGMS : A1982.466	Glass bottle found in Abergavenny.	bottle marked: "Phillips & sons ltd, Newport" lid with "bulmers cider"	generic object does not specifically contribute to local story. Poor display and engagement potential
T1510	White glass bottle, 'L. Pritchards Water Works Blaenavon'.	bottle marked "L Richards Water Works, Blaenavon" wooden stopper inside.	generic object does not specifically contribute to local story. Poor display and engagement potential
ABGMS : A1977.12	Child's sweet jar.	bottle appears to be a perfume bottle	generic object does not specifically contribute to local story. Poor display and engagement potential
ABGMS : A1977.82	Bottle, clear glass, '1107'.	Bottle marked: "1107" on base, spirit type bottle	generic object does not specifically contribute to local story. Poor display and engagement potential
ABGMS : A1977.84	Green bottle, broken top.	square bottle	generic object does not specifically contribute to local story. Poor display and engagement potential
ABGMS : A1978.617	Miniature Cointreau bottle.	bottle marked "Cointreau liquor"	generic object does not specifically contribute to local story. Poor display and engagement potential
ABGMS : A1979.516	Glass bottle.	bottle marked: "Bromley's extract of herbs, Bloomsbury works, Leeds"	generic object does not specifically contribute to local story. Poor display and engagement potential
ABGMS : A1982.345	Bottle found in Abergavenny, glass.		generic object does not specifically contribute to local story. Poor display and engagement potential

ABGMS : A1982.347	Bottle found in Abergavenny, glass.		generic object does not specifically contribute to local story. Poor display and engagement potential
ABGMS : A1982.349	Glass jar found in Abergavenny.	screw top, small jar, marked: "chesebrough manfc co co, new york"	not in collecting area generic object does not specifically contribute to local story. Poor display and engagement potential
ABGMS : A1982.353	Bottle found in Abergavenny, glass.	5 lids and 5 bottoms, but none are matching.	
A1982.452a,c,d,e,f,h, i,j,k,l	10 ceramic pots and lids	Cream ceramic pots/jars and lids. A1982.452.C: base "....Portobello"; A1982.452.j+k: lids, have the words "Pan " and "yan" on. JPan Yan pickle was an early 20th century pickle made in London.	generic object does not specifically contribute to local story. Poor display and engagement potential generic object does not specifically contribute to local story. Poor display and engagement potential
ABGMS : A1982.354b	Bottle found in Abergavenny, glass.		generic object does not specifically contribute to local story. Poor display and engagement potential
ABGMS : A1982.355	Glass jar found in Abergavenny.	bottle marked: "Brand &co ltd, London, England"	generic object does not specifically contribute to local story. Poor display and engagement potential
ABGMS : A1982.358	Glass vase found in Abergavenny.	a food jar, decorative with H & C lettering	generic object does not specifically contribute to local story. Poor display and engagement potential
ABGMS : A1982.360	Bottle found in Abergavenny, glass.		generic object does not specifically contribute to local story. Poor display and engagement potential
ABGMS : A1982.362	Bottle found in Abergavenny, glass.	bottle marked: "fletchers tomato sauce" copper wire wrapped around its neck	generic object does not specifically contribute to local story. Poor display and engagement potential
ABGMS : A1982.363	Bottle found in Abergavenny, glass.		generic object does not specifically contribute to local story. Poor display and engagement potential
ABGMS : A1982.365	Bottle found in Abergavenny, glass.		generic object does not specifically contribute to local story. Poor display and engagement potential

A1982.369	bottle found in Abergavenny	small glass bottle with stopper inside	generic object does not specifically contribute to local story. Poor display and engagement potential
ABGMS : A1982.369	Bottle found in Abergavenny, glass.		generic object does not specifically contribute to local story. Poor display and engagement potential
ABGMS : A1982.376	Glass jar found in Abergavenny.		generic object does not specifically contribute to local story. Poor display and engagement potential
ABGMS : A1982.378	Bottle found in Abergavenny, glass.		generic object does not specifically contribute to local story. Poor display and engagement potential
ABGMS : A1982.379	Bottle found in Abergavenny, glass.	ink jar with screw top	generic object does not specifically contribute to local story. Poor display and engagement potential
ABGMS : A1982.380	Bottle found in Abergavenny, glass.	small clear glass bottle	generic object does not specifically contribute to local story. Poor display and engagement potential
ABGMS : A1982.381	Glass jar found in Abergavenny.	Jar marked: CWS [Coop wholesale society]	generic object does not specifically contribute to local story. Poor display and engagement potential
ABGMS : A1982.382	Glass vase found in Abergavenny.	glass jar, decorative moulding	generic object does not specifically contribute to local story. Poor display and engagement potential
ABGMS : A1982.385	Bottle found in Abergavenny, glass.	bottle marked "Lyons London" on it, possibly ink bottle	generic object does not specifically contribute to local story. Poor display and engagement potential
ABGMS : A1982.389	Bottle found in Abergavenny, glass.		generic object does not specifically contribute to local story. Poor display and engagement potential
ABGMS : A1982.392	Bottle found in Abergavenny, glass.	bottle marked on base "FCC..."	generic object does not specifically contribute to local story. Poor display and engagement potential

ABGMS : A1982.394	Small glass bottle found in Abergavenny.		generic object does not specifically contribute to local story. Poor display and engagement potential
ABGMS : A1982.399	Bottle found in Abergavenny, glass.	top of bottle marked "phosphorene" and "[image]crown" on bade. copper wire around neck.	generic object does not specifically contribute to local story. Poor display and engagement potential
ABGMS : A1982.401	Bottle found in Abergavenny, glass.		generic object does not specifically contribute to local story. Poor display and engagement potential
ABGMS : A1982.402	Bottle found in Abergavenny, glass.		generic object does not specifically contribute to local story. Poor display and engagement potential
ABGMS : A1982.405	Bottle found in Abergavenny, glass.	remains of cork inside	generic object does not specifically contribute to local story. Poor display and engagement potential
ABGMS : A1982.406	Small glass bottle found in Abergavenny.		generic object does not specifically contribute to local story. Poor display and engagement potential
ABGMS : A1982.407	Bottle found in Abergavenny, glass.		generic object does not specifically contribute to local story. Poor display and engagement potential
ABGMS : A1982.417	Bottle found in Abergavenny, glass.	bottle marked: Iferris &co, Bristol"	generic object does not specifically contribute to local story. Poor display and engagement potential
ABGMS : A1982.420	Bottle found in Abergavenny, glass.		generic object does not specifically contribute to local story. Poor display and engagement potential
ABGMS : A1982.421	Bottle found in Abergavenny, glass.		generic object does not specifically contribute to local story. Poor display and engagement potential
ABGMS : A1982.424	Bottle found in Abergavenny, glass.		generic object does not specifically contribute to local story. Poor display and engagement potential

ABGMS : A1982.425	Bottle found in Abergavenny, glass, with stopper.		generic object does not specifically contribute to local story. Poor display and engagement potential
ABGMS : A1982.426	Glass jar found in Abergavenny.		generic object does not specifically contribute to local story. Poor display and engagement potential
ABGMS : A1982.433	Bottle found in Abergavenny, glass.	Bottle marked " teaspoons written", with measure lines	generic object does not specifically contribute to local story. Poor display and engagement potential
ABGMS : A1982.434	Bottle found in Abergavenny, glass.		generic object does not specifically contribute to local story. Poor display and engagement potential
ABGMS : A1982.435	Bottle found in Abergavenny, glass.		generic object does not specifically contribute to local story. Poor display and engagement potential
ABGMS : A1982.437	Bottle found in Abergavenny, glass.	bottle marked: "AJ white ltd" down both sides. Cork in place	generic object does not specifically contribute to local story. Poor display and engagement potential
ABGMS : A1982.438	Bottle found in Abergavenny, glass.		generic object does not specifically contribute to local story. Poor display and engagement potential
ABGMS : A1982.440	Bottle found in Abergavenny, glass.	bottle marked on 3 sides, first side, " hauthaway's " next side "peerless gloss" next side "made in U.S.A"	generic object does not specifically contribute to local story. Poor display and engagement potential
ABGMS : A1982.443	Bottle found in Abergavenny, glass.		generic object does not specifically contribute to local story. Poor display and engagement potential
ABGMS : A1982.445	Bottle found in Abergavenny, glass.	Bottle marked: "D.F.Pritchard ltd, crumlin"	generic object does not specifically contribute to local story. Poor display and engagement potential
A1982.445b	Bottle found in Abergavenny, glass.	bottle marked "D.F.Pritchard ltd, crumlin"	generic object does not specifically contribute to local story. Poor display and engagement potential

ABGMS : A1982.450	Bottle found in Abergavenny, glass.	bottle marked: "BLACKWOOD (?) & co, London"	generic object does not specifically contribute to local story. Poor display and engagement potential
ABGMS : A1982.455	Bottle found in Abergavenny, brown glass.	brown jar, marked: "oxo" on 2 sides "4 oz",	generic object does not specifically contribute to local story. Poor display and engagement potential
ABGMS : A1982.463	Bottle found in Abergavenny, brown glass.	marked on base "wellcome, 107, chem works"	generic object does not specifically contribute to local story. Poor display and engagement potential
ABGMS : A1982.464	Bottle found in Abergavenny, brown glass.		generic object does not specifically contribute to local story. Poor display and engagement potential
ABGMS : A1982.556	Small oval ink bottle, found in museum collection.		no local significance. no display or engagement potential,
ABGMS : A1982.559	Round glass dish with hole in the base, found in museum collections.		no local significance. no display or engagement potential,
ABGMS : A1983.34	Bottle, small medicine, clear glass C20th.		generic object does not specifically contribute to local story. Poor display and engagement potential
T1682	Small white glass bottle with white patina on inside of base.		no local significance. no display or engagement potential,
T1683	Blue glass bottle.		no local significance. no display or engagement potential,
T1684	2 glass ink wells, one with red cork.		no local significance. no display or engagement potential,
ABGMS : A1982.80	Butter dish.		outside collecting area. .
ABGMS : A1982.82	China vase, pink with floral decoration.	vase marked "crown Devon, stoke on Trent, Wye pottery"	outside collecting area.
T1695	Sauce dish with blue design.		generic object does not specifically contribute to local story. Poor display and engagement potential.
ABGMS : A0.431	Earthenware cider mug.		no local significance. no display or engagement potential,

ABGMS : A1977.10	Child's teacup.	small dolls teacup. Says "foreign" mark on base, image on base of a doll	generic object does not specifically contribute to local story. Poor display and engagement potential.
ABGMS : A1977.11	Child's saucer.	"foreign" mark on base.	generic object does not specifically contribute to local story. Poor display and engagement potential.
ABGMS : A1982.81	Glass 'basket', coloured.	glass sweet dish	generic object does not specifically contribute to local story. Poor display and engagement potential
ABGMS : A1982.816	China doll's head and bust in C18th dress.	Appears to be a cake decoration.	generic object does not specifically contribute to local story.
T1685	White china cup and 2 saucers with light purple decoration.		no local significance. no display or engagement potential,
T1686	Small brown cup decorated with flower design.	M: no donor. DT: no extra info. Store: no mark, possibly brown basalt ware	no local significance. no display or engagement potential,
ABGMS : A1969.1	Mineral water bottle.		generic object does not specifically contribute to local story. Poor display and engagement potential.
ABGMS : A1980.126	Green glass Hamilton bottle with broken neck.		generic object does not specifically contribute to local story. Poor display and engagement potential.
T1690	Broken bottle, '...rated waters Conways'.		generic object does not specifically contribute to local story. Poor display and engagement potential. Poor condition and engagement
ABGMS : A1982.346	2 glass jars found in Abergavenny.		generic object does not specifically contribute to local story. Poor display and engagement potential. Poor condition and engagement
ABGMS : A1982.350	Bottle found in Abergavenny, glass.		generic object does not specifically contribute to local story. Poor display and engagement potential.
ABGMS : A1982.354.a	Bottle found in Abergavenny, glass.	s	generic object does not specifically contribute to local story. Poor display and engagement potential.

ABGMS : A1982.356 Bottle found in Abergavenny, glass.

ABGMS : A1982.357 Bottle found in Abergavenny, glass.

ABGMS : A1982.361 Bottle found in Abergavenny.

ABGMS : A1982.364 Bottle found in Abergavenny, glass.

ABGMS : A1982.367 Bottle found in Abergavenny, glass. ink bottle,

ABGMS : A1982.368 Bottle found in Abergavenny, glass.

ABGMS : A1982.370 Bottle found in Abergavenny, glass.

ABGMS : A1982.371 Bottle found in Abergavenny, glass.

ABGMS : A1982.372 Bottle found in Abergavenny, glass.

ABGMS : A1982.373 Bottle found in Abergavenny, glass. Small ink type bottle, makers mark with an M in the middle of it

ABGMS : A1982.374 Bottle found in Abergavenny, glass. bottle marked "No.54".

generic object does not specifically contribute to local story. Poor display and engagement potential.

generic object does not specifically contribute to local story. Poor display and engagement potential.

generic object does not specifically contribute to local story. Poor display and engagement potential.

generic object does not specifically contribute to local story. Poor display and engagement potential.

generic object does not specifically contribute to local story. Poor display and engagement potential.

generic object does not specifically contribute to local story. Poor display and engagement potential.

generic object does not specifically contribute to local story. Poor display and engagement potential.

generic object does not specifically contribute to local story. Poor display and engagement potential.

generic object does not specifically contribute to local story. Poor display and engagement potential.

generic object does not specifically contribute to local story. Poor display and engagement potential.

generic object does not specifically contribute to local story. Poor display and engagement potential.

ABGMS : A1982.377	Bottle found in Abergavenny, glass.		generic object does not specifically contribute to local story. Poor display and engagement potential.
ABGMS : A1982.383	Bottle found in Abergavenny, glass.	Bottle marked "PASCALLS"	generic object does not specifically contribute to local story. Poor display and engagement potential.
ABGMS : A1982.384	Bottle found in Abergavenny, glass.		generic object does not specifically contribute to local story. Poor display and engagement potential.
ABGMS : A1982.386	Bottle found in Abergavenny, glass.		generic object does not specifically contribute to local story. Poor display and engagement potential.
ABGMS : A1982.387	Bottle found in Abergavenny, glass.	mark on base: "FSC" in a diamond shape.	generic object does not specifically contribute to local story. Poor display and engagement potential.
ABGMS : A1982.388	Bottle found in Abergavenny, glass.		generic object does not specifically contribute to local story. Poor display and engagement potential.
ABGMS : A1982.390	Bottle found in Abergavenny, glass.	mark on bottom says "10z"	generic object does not specifically contribute to local story. Poor display and engagement potential.
ABGMS : A1982.393	Bottle found in Abergavenny, glass, contains dirt.		generic object does not specifically contribute to local story. Poor display and engagement potential.
ABGMS : A1982.395	Bottle found in Abergavenny, glass.		generic object does not specifically contribute to local story. Poor display and engagement potential.
ABGMS : A1982.396	Glass jar found in Abergavenny.		generic object does not specifically contribute to local story. Poor display and engagement potential.
ABGMS : A1982.398	Bottle found in Abergavenny, glass.		generic object does not specifically contribute to local story. Poor display and engagement potential.

ABGMS : A1982.400 Bottle found in Abergavenny.

ABGMS : A1982.408 Bottle found in Abergavenny, glass.

ABGMS : A1982.410 Bottle found in Abergavenny, glass.

ABGMS : A1982.414 Bottle found in Abergavenny, glass.

ABGMS : A1982.416 Bottle found in Abergavenny, glass.

ABGMS : A1982.422 Bottle found in Abergavenny, glass.

ABGMS : A1982.427 Bottle found in Abergavenny, glass.

ABGMS : A1982.428 Bottle found in Abergavenny, glass.

ABGMS : A1982.436 Bottle found in Abergavenny, glass.

ABGMS : A1982.448 Bottle found in Abergavenny, glass.

ABGMS : A1982.449 Bottle found in Abergavenny, glass.

bottle marked: "J&E ATKINSON, London"

bottle marked: "Daddy's sauce" bottle

generic object does not specifically contribute to local story. Poor display and engagement potential.

generic object does not specifically contribute to local story. Poor display and engagement potential.

generic object does not specifically contribute to local story. Poor display and engagement potential.

generic object does not specifically contribute to local story. Poor display and engagement potential.

generic object does not specifically contribute to local story. Poor display and engagement potential.

generic object does not specifically contribute to local story. Poor display and engagement potential.

generic object does not specifically contribute to local story. Poor display and engagement potential.

generic object does not specifically contribute to local story. Poor display and engagement potential.

generic object does not specifically contribute to local story. Poor display and engagement potential.

generic object does not specifically contribute to local story. Poor display and engagement potential.

generic object does not specifically contribute to local story. Poor display and engagement potential.

ABGMS : A1982.453	Bottle found in Abergavenny, glass.	clear glass medicine type bottle with yellow powder residue inside	generic object does not specifically contribute to local story. Poor display and engagement potential.
ABGMS : A1982.460	Bottle found in Abergavenny, brown glass.	bottle marked "Branson Ltd"	generic object does not specifically contribute to local story. Poor display and engagement potential.
ABGMS : A1982.462	Bottle found in Abergavenny, brown glass.	Bovril jar, small	generic object does not specifically contribute to local story. Poor display and engagement potential.
A0.102.1	white ceramic bowl		generic object does not specifically contribute to local story. Poor display and engagement potential.
A0.102.2	white ceramic jug		generic object does not specifically contribute to local story. Poor display and engagement potential.
ABGMS : A0.415.1	Small earthenware pot or beaker, broken, buff body, clear glaze, biscuit coloured with ridge along the top edge.	Mark on base: "WEDGEWOOD, 42,S,11 or two strokes" . S =mark indicates: 1864 or 1890. store.	generic object does not specifically contribute to local story. Poor display and engagement potential
ABGMS : A1972.10	Cream jug.	Possible basalt ware	generic object does not specifically contribute to local story. Poor display and engagement potential
ABGMS : A0.4815	Jug with yellow and brown design.	mark: "pountney"	no local significance. no display or engagement potential, generic object does not specifically contribute to local story. Poor display and engagement potential
ABGMS : A0.6	Bottle, beige stoneware, hole in base. Beige stoneware bottle, 'A.R.	Stone ginger beer bottle, marked: "A R Cartwright , Ludlow"	
ABGMS : A1971.1	Carthwright's Ludlow'.		outside collecting area
ABGMS : A1976.27	Stone bottle, beige.		outside collecting area
ABGMS : A1978.94	Stoneware beer / mineral water bottle, 'Facey & Son', neck broken.	Bottle marked "Facey & Sons" wholesale bottlers Abergavenny. Bottle made by Powell of Bristol.	duplicate, others in better condition
T1606	Jug glazed green and painted with floral design in lighter shades of green.		no local significance

ABGMS : A1979.293	Large bottle, Gilbey's Scotch Whiskey, orange glass.		generic object does not specifically contribute to local story. Poor display and engagement potential
T1607	Pot and lid, earthenware, 2 handles, covered in white substance inside and outside.		
ABGMS : A0.4823.a	Glass cover.	Item damaged beyond repair	
ABGMS : A0.4823.b	Wooden base.		duplicate, others in better condition
ABGMS : A1980.248	Silver plated (now gone) fretwork frame for glass fruit bowl.		no local significance high risk, poor display and engagement potential
ABGMS : A1982.601	Spoon, silver plated.		no local significance high risk, poor display and engagement potential
ABGMS : A1982.610	Looped door handle.		no local significance. no display or engagement potential,
ABGMS : A1982.618	E. Pollard & Co. Ltd.' sewing arm.		no local significance
ABGMS : A1982.622	Tin of blue paint from Crewe, corroded.	tin of paint (blue) with brass plate, Marked: 'LMSR to be returned to locomotive stores, Crewe, when empty"	no local connection beyond donor's address.
ABGMS : A1982.690	Iron pig hook.	From Knights Mill, Glanusk, Powys	generic object does not specifically contribute to local story. Poor display and engagement potential
ABGMS : A1982.707	Small moor with 'T' handle.		no local significance
ABGMS : A1982.710	Iron tube, corroded.		outside collecting area
ABGMS : A1976.33	Metal implement.		no local connection beyond donor address.
ABGMS : A1982.594	Iron cooking pot, corroded.		incomplete, poor display and engagement potential
ABGMS : A1982.595	Fragment of earthenware pot.		no local significance. Poor display and engagement potential
ABGMS : A1982.603	Brass clock face rim.	From Knights Mill, Glan Usk, Powys	generic object does not specifically contribute to local story. Poor display and engagement potential
ABGMS : A1982.604	Eezywynder' (?) clock part.	From Knights Mill, Glan Usk, Powys	contribute to local story. Poor display and engagement potential
			no local significance poor display and engagement potential
			out of collecting area
			out of collecting area

ABGMS : A1982.614	'Valet' safety razor and case, three spare blades.	generic object does not specifically contribute to local story, very poor condition, only local link is local donor. no local significance, poor display and engagement potential
ABGMS : A1982.654	Hinge, corroded.	no local significance, poor display and engagement potential
ABGMS : A1982.715	Iron implement, spear shaped, corroded.	no local significance, poor display and engagement potential
ABGMS : A1982.722	Large drill bit with attachment for two blades.	no local significance, poor display and engagement potential
ABGMS : A1982.724.a-b	Two spiked wedges.	no local significance, poor display and engagement potential
ABGMS : A1982.726	Round wooden tool handle.	no local significance, poor display and engagement potential
ABGMS : A1982.727	Round wooden tool handle.	no local significance, poor display and engagement potential
ABGMS : A1982.728	Tool with bent blade and a wooden handle.	no local significance, poor display and engagement potential
ABGMS : A1982.749	Piece of grooved steel.	no local significance, poor display and engagement potential
ABGMS : A1982.752	Piece of iron with screw thread and nut.	no local significance, poor display and engagement potential
ABGMS : A1982.758	Base of a small oil lamp, base is red, chimney bracket is brass.	no local significance, poor display and engagement potential
T1612	Part of oil light, 1 spanner, 1 door hinge, tin with shells and teeth, 1 small chisel, 1 silver rod.	no local significance, poor display and engagement potential
ABGMS : A0.244	Large, rectangular dish, willow pattern.	generic object does not specifically contribute to local story, very poor condition, only local link is local donor. generic object does not specifically contribute to local story, very poor condition, only local link is local donor.
ABGMS : A0.301	Dish, enamelled tin, Chinese design.	generic object does not specifically contribute to local story, very poor condition, only local link is local donor.
ABGMS : A1979.219	Glass inkwell, designed to be unspillable, with original brown paper wrapping.	generic object does not specifically contribute to local story, very poor condition, only local link is local donor.
	no original brown paper wrapping.	

ABGMS : A1980.90	Blue glass vase with coloured enamel flowers, broken.		generic object does not specifically contribute to local story, very poor condition, only local link is local donor. generic object does not specifically contribute to local story, very poor condition, only local link is local donor.
T1677	Glass cover.		generic object does not specifically contribute to local story, very poor condition, only local link is local donor.
ABGMS : A1982.461a	Bottles found in Abergavenny, green glass.		generic object does not specifically contribute to local story, very poor condition, only local link is local donor. generic object does not specifically contribute to local story. Poor display and engagement potential
ABGMS : A0.575	Bay rum decanter, glass		generic object does not specifically contribute to local story. Poor display and engagement potential
A1982.348	bottle	bottle marked: " Mason's extra GT?" jar marked: "the ideal food: virol- a preparation of bone marrow, an ideal fat food for children and invalids"	
ABGMS : A1976.28	Stone bottle, beige.		Out of collecting area. generic object does not specifically contribute to local story. Poor display and engagement potential
ABGMS : A1982.351	Bottle found in Abergavenny, glass.		generic object does not specifically contribute to local story. Poor display and engagement potential
ABGMS : A1982.352	Bottle found in Abergavenny, glass.		generic object does not specifically contribute to local story. Poor display and engagement potential
ABGMS : A1982.359	Bottle found in Abergavenny, glass.		generic object does not specifically contribute to local story. Poor display and engagement potential
ABGMS : A1982.397	Bottle found in Abergavenny, glass.	bottle marked "vineos brand, lightening cough cure"	generic object does not specifically contribute to local story. Poor display and engagement potential
ABGMS : A1982.403	Bottle found in Abergavenny, glass.	bottle marked "mellor &co" "waster"	generic object does not specifically contribute to local story. Poor display and engagement potential

ABGMS : A1982.409	Bottle found in Abergavenny, glass.		generic object does not specifically contribute to local story. Poor display and engagement potential
ABGMS : A1982.412	Bottle found in Abergavenny, glass.		generic object does not specifically contribute to local story. Poor display and engagement potential
ABGMS : A1982.413	Bottle found in Abergavenny, glass.	glass stoppered bottle, greenish glass.	generic object does not specifically contribute to local story. Poor display and engagement potential
ABGMS : A1982.415	Bottle found in Abergavenny, glass.		generic object does not specifically contribute to local story. poor display and engagement potential
ABGMS : A1982.418	Bottle found in Abergavenny, glass.		generic object does not specifically contribute to local story. poor display and engagement potential
ABGMS : A1982.423	Bottle found in Abergavenny, glass.	Bottle marked: "Eifel tower lemonade" "foster clark , maidstone"	generic object does not specifically contribute to local story. poor display and engagement potential
ABGMS : A1982.430	Bottle found in Abergavenny, glass.	bottle marked: "CAMP Coffee and chicory ess" "Glasgow" "Patterson's"	generic object does not specifically contribute to local story. poor display and engagement potential
ABGMS : A1982.431	Bottle found in Abergavenny, glass.	Bottle marked "Holbrook & co"	generic object does not specifically contribute to local story. Poor display and engagement potential
ABGMS : A1982.432	Bottle found in Abergavenny, glass.	bottle marked: "boots the chemist"	generic object does not specifically contribute to local story. Poor display and engagement potential
ABGMS : A1982.439	Bottle found in Abergavenny, glass.		generic object does not specifically contribute to local story. Poor display and engagement potential
ABGMS : A1982.441	Bottle found in Abergavenny, glass.	bottle, 4 sided, marked: " AJ White" down one side "London" down opposing side, "bottle made in Germany".	generic object does not specifically contribute to local story. Poor display and engagement potential

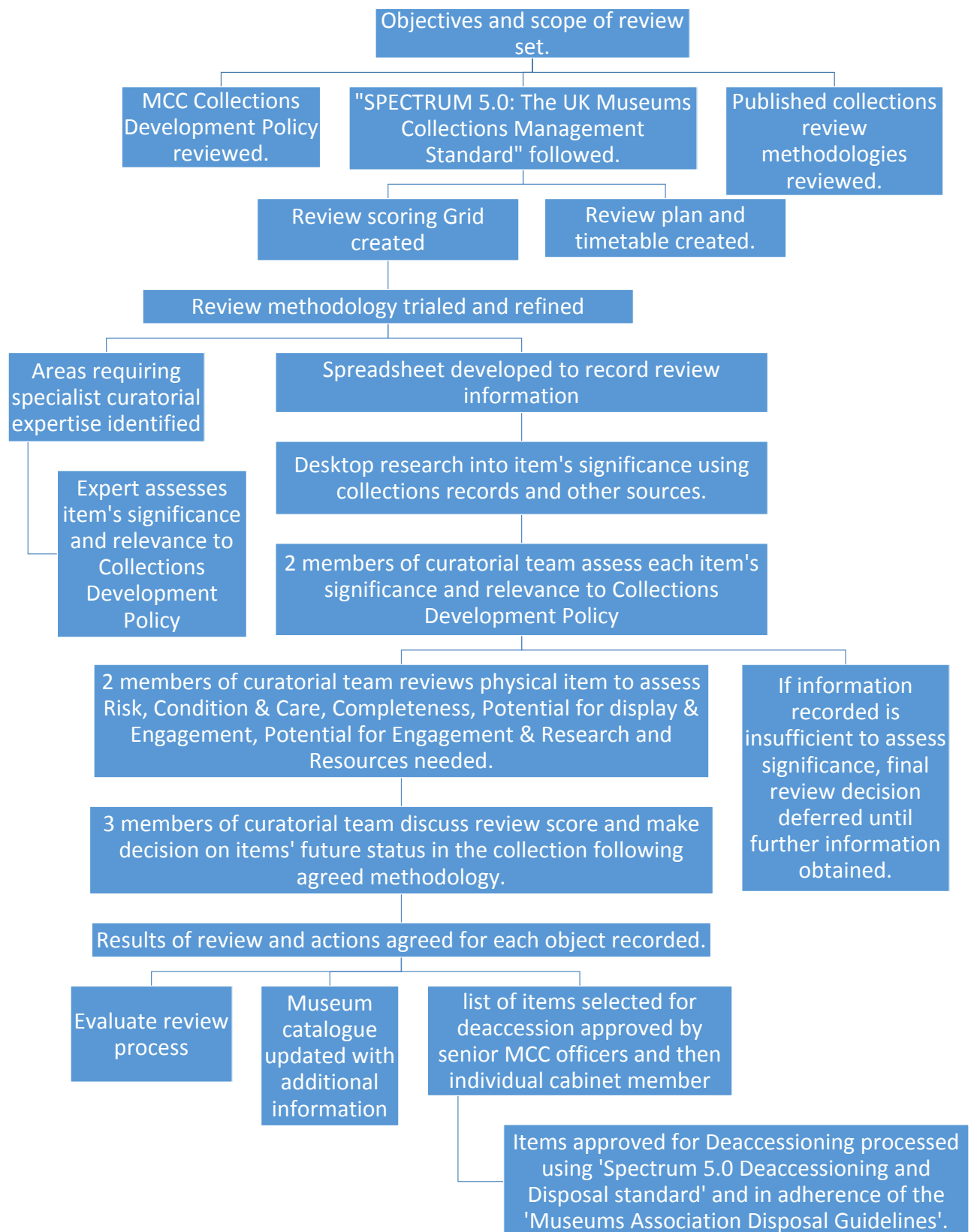
ABGMS : A1982.442	Bottle found in Abergavenny, glass.	Bottle marked: "Camp coffee and chicory essence, Patterson's"	generic object does not specifically contribute to local story. Poor display and engagement potential
ABGMS : A1982.447	Bottle found in Abergavenny, glass.	bottle marked with diagonal lettering "S.C.W.S Ltd" "Glasgow, sterling",	generic object does not specifically contribute to local story. Poor display and engagement potential
ABGMS : A1982.451	Bottle found in Abergavenny, glass.		generic object does not specifically contribute to local story. Poor display and engagement potential
T1673	Glass jar with note 'Rennet jar from Cefn Priory pres. W.R. Jackson Oct. 1969'.	note in bottle has become separated from the original item. Further investigation has revealed that this is not the rennet jar from Cefn Priory described on the note. Actual object numbered was found to have no local significance.	no local significance, poor display and engagement potential
ABGMS : A0.4822.a	Lid of vegetable dish.		no local significance, poor display and engagement potential
ABGMS : A0.4822.b	Dish for vegetables.		no local significance, poor display and engagement potential
ABGMS : A0.4822.c	Plate belonging to vegetable dish, incomplete.	Plate Marked: "Hill Potteries," "[image]bee hive", "suez, BML". Object is in 4 parts, all pieces are there to make object complete	no local significance. Poor display and engagement potential
ABGMS : A1967.3	Bowl (1), porcelain, and broken piece (2).	Object is incomplete as not all the broken pieces are there.	generic object does not specifically contribute to local story. Poor display and engagement potential. Poor condition
ABGMS : A1976.24	Brown stone bottle.		out of collecting area
ABGMS : A1976.25	Stone bottle for ink.		out of collecting area
ABGMS : A1976.26	Stone bottle, brown glaze.	bottle marked: " Lovatt & Lovatt LTD"	out of collecting area
ABGMS : A1976.29.2	Stone bottle for ink.		out of collecting area
ABGMS : A1977.80 a-b	Bottle fragments / parts.	2x bottle fragments, marked: "Thomas bath of Abergavenny	This bottle fragments is a duplicate of other complete items in the collection in better condition
ABGMS : A1977.80.c	Bottle fragments / parts.	neck of bottle marked "FAC"	This bottle fragments is a duplicate of other complete items in the collection in better condition

ABGMS : A1977.80.d	Bottle fragments / parts.	part of bottle	This bottle fragments is a duplicate of other complete items in the collection in better condition
ABGMS : A1977.80.f	Bottle fragments / parts.	fragment of bottle marked: " Thomas bath, Abergavenny"	This bottle fragments is a duplicate of other complete items in the collection in better condition
ABGMS : A1977.80.g	Bottle fragments / parts.	neck of bottle	This bottle fragments is a duplicate of other complete items in the collection in better condition
ABGMS : A1977.80.i	Bottle fragments / parts.	fragment of bottle, marked "Price"	This bottle fragments is a duplicate of other complete items in the collection in better condition
ABGMS : A1977.80.j	Bottle fragments / parts.	part of bottle	This bottle fragments is a duplicate of other complete items in the collection in better condition
ABGMS : A1977.83	Glazed pottery ointment jar.		out of collection area
ABGMS : A1980.113	Stoneware bottle with glass marble stuck in mouth.	NB: marble stuck in bottle's mouth is not original stopper	generic object does not specifically contribute to local story. Poor display and engagement potential
ABGMS : A1982.469	Bottle found in Abergavenny, earthenware.	Bottle marked: "DOULTON LAMBETH"	generic object does not specifically contribute to local story. Poor display and engagement potential
ABGMS : A0.517	Brace.		1 of 2 very similar items from the same donor. The other item is a better example
ABGMS : A0.482.3	Curved iron with hook, purpose unknown.		No local significance. incomplete, poor display and engagement potential
ABGMS : A1976.222	Red sandstone pebble.		brought to the museum as an enquiry in 1970s. Identification revealed that is outside the collections development policy.
ABGMS : A1982.597	Top of a small gas stove.		no local significance, poor display and engagement potential
ABGMS : A1982.747	Iron bar.		no local significance, poor display and engagement potential. Poor condition

ABGMS : A1982.751	Piece of flat iron.		no local significance, poor display and engagement potential. Poor condition
ABGMS : A1982.806	Two iron 'S' hooks.		no local significance, poor display and engagement potential.
ABGMS : A1982.807	Gas light fitting.		no local significance, poor display and engagement potential.
ABGMS : A1982.808	Iron wall fitting. 2 shovels from Grwyne Reservoir, used in construction c 1925, in very bad condition.		no local significance, poor display and engagement potential.
ABGMS : A1989.12			outside collecting area and in very poor condition
T1638	Metal cover, silver.		no local significance, poor display and engagement potential. Poor condition
T1639	2 pick axe heads, corroded.		no local significance, poor display and engagement potential. Poor condition
T1640	Wooden spindel with string attached.		no local significance, poor display and engagement potential. Poor condition
T1642	Metal tool, corroded. Pully block with two wheels, Knight's		no local significance, poor display and engagement potential. Poor condition
ABGMS : A1982.683	Mill, Glanusk.	From Knights Mill, Glan Usk, Powys	outside collection area poor condition, display and engagement potential, no local significance beyond donor address
ABGMS : A1982.756	3-pronged pitchfork.		outside collecting area
ABGMS : A1982.627	Spindle box from Knights Mill.	From Knights Mill, Glan Usk, Powys	outside collecting area
ABGMS : A1982.629	3-sided iron spanner from Knights Mill.	From Knights Mill, Glan Usk, Powys	outside collecting area
ABGMS : A1982.631	4-faced spanner from Knights Mill. 2-pronged iron damsel from Cloddock	From Knights Mill, Glan Usk, Powys	outside collecting area
ABGMS : A1982.632	Mill. 2-pronged iron damsel from Knights	From Cloddock Mill, Cloddock Herefordshire.	outside collecting area
ABGMS : A1982.634	Mill. Square headed iron damsel, Knights	From Knights Mill, Glan Usk, Powys	outside collecting area
ABGMS : A1982.635	Mill.	From Knights Mill, Glan Usk, Powys	outside collecting area
ABGMS : A1966.36	Mill bill.	From Knights Mill, Glan Usk, Powys	outside collecting area

T1519	Kettle, very dirty.		no local significance. Poor display and engagement potential
T1520	Tile (?), 'Ebbw Vale'.		no local significance. Poor display and engagement potential
ABGMS : A1963.1	Bottle, earthenware.		no local significance. Poor display and engagement potential
ABGMS : A1975.1	Earthenware bottle with spout, cream glaze, 'Price'.	Bottle marked: " Price of Bristol" maker	no local significance. Poor display and engagement potential
T1493	Green glass bottle, 'Gordon's Special Dry London Gin', 1/4 litre (?).	Glass bottled labelled: "Gordon's Special Dry London Gin" in good condition.	generic object does not specifically contribute to local story. Poor display and engagement potential
ABGMS : A0.5	Bottle, brown stoneware, found on Woolworth's site.		generic object does not specifically contribute to local story. Poor display and engagement potential
T1491	Brown glass bottle with cork and liquid content.	M: unknown. No additional info found. Potential risk of unidentified liquid in bottle	no local significance. Poor display and engagement potential. H&S risk from unidentified liquid.
T1488	Glass bottle, 'Stotherts tasteless oil', 1/4 full.	bottle marked: " Stotherts tasteless oil". Bottle is 1/4 full. Tasteless oil could be caster oil. MSDS says castor oil is not a hazardous substance but cannot be disposed of down drains.	no local significance. Poor display and engagement potential. H&S risk from unidentified liquid.
A1983.1015	sign, metal "children"		no local significance. Poor display and engagement potential
T1489	Corroded tin commemorating silver jubilee King George and Queen Mary, Cooperative Society.		no local significance. Poor display and engagement potential
ABGMS : A1982.636	Square headed iron damsel, Knights Mill.	From Knights Mill, Glan Usk, Powys	outside collecting area

Monmouthshire Museums Collections' review process: April 2019



This page is intentionally left blank

Collection's Review Scoring grid. Draft 2. December 2018- Based UCL Collections Review Rubric, CyMAL (2013) "Why do we have it"- A significance Process and Template and Collections Trust (2014) A guide to selecting a review methodology for collections rationalisation, and adapted to our needs following discussion with MCC Museum staff

Method: Assign grade to object for each category based on statements below and enter score into spreadsheet. Grade is assigned based on lowest relevant statement in each section. Add supporting comments in "Reason" column of spreadsheet.

Decision: If object scores any **C** or **D** in **Significance, Condition, or Risk**- consider for disposal.

If object scores 2 **D**'s in **Completeness, Display, Engagement or Resource**- consider for disposal.

	Significance & Relevance to Collections Development policy	Risks associated with caring and using the object	Condition and care	Completeness	Potential for display and use	engagement and research	Resource to manage, care, use
A	<ul style="list-style-type: none"> Of clear national, regional, local or community significance. Relevant to the Collections Development Policy. Object known to be unique or rare. 	Low risks of hazards.	<ul style="list-style-type: none"> Stable material. Good condition. No conservation problems. Minor cleaning needed. 	<ul style="list-style-type: none"> Either fully complete or the missing elements are not integral to its importance and significance. Appears to be in its original condition. 	Potential to be: <ul style="list-style-type: none"> Permanently on display Star object/"wow" factor. Strongly identified in the public's mind with the organisation or location. 	<ul style="list-style-type: none"> Regularly used or strong potential for public engagement Regularly or strong potential for research use. 	Existing resources are appropriate.
B	<ul style="list-style-type: none"> Of clear local or community value. Relevant to the Collections Development Policy. 	Low risk at present but hazards could be exposed without appropriate collections management.	<ul style="list-style-type: none"> Stable material but needs monitoring. Fair condition Some risk of decay and deterioration. Some conservation treatment desirable. 	<ul style="list-style-type: none"> Complete or missing only a small number of parts. In near original condition, or any adaptations are consistent with its history and use. Any missing parts do not make it unrecognisable. 	Potential to: <ul style="list-style-type: none"> Engage visitor interest and stimulate discussion. Contribute to a permanent or temporary exhibition. 	<ul style="list-style-type: none"> Potential for use in public engagement, Potential for research use. 	Small amount of additional resource required.
C	<ul style="list-style-type: none"> Of assumed but unproven or of little specific local, community or organisational importance but possibly some historical, aesthetic artistic, scientific or social interest. Outside the Collections' Development Policy. Similar to other item within Monmouthshire Museums' collections. 	<ul style="list-style-type: none"> Some hazards exist but these can be safely managed with appropriate PPE. Size or weight of object requires additional resource to safely move. 	<ul style="list-style-type: none"> Unstable material. High risk of deterioration- immediate action required. Poor condition. Major areas of loss. Significant conservation investment required to prepare for use or display, 	<ul style="list-style-type: none"> Incomplete Object has been significantly adapted and these changes do not relate to the significant periods of its history. 	<ul style="list-style-type: none"> No current public focus but may have some potential for this in the future. Not known to have been used in displays. 	<ul style="list-style-type: none"> Little potential for public engagement use. Little potential for research use. 	Significant additional resource required
D	<ul style="list-style-type: none"> Not considered to have aesthetic, Artistic, historical, scientific or social interest. Outside the Collections Development Policy. Duplicate of existing item. 	<ul style="list-style-type: none"> Caring for or using object presents immediate hazard. Size or weight of objects presents risk and requires significant additional resource to safely move/provide access. 	<ul style="list-style-type: none"> Very unstable material. Beyond repair. Very poor condition. Unsustainable conservation investment required. Poses a risk to other collections. 	<ul style="list-style-type: none"> Incomplete and its original function or appearance is not clear. Is unrecognisable. May be a fake 	<ul style="list-style-type: none"> Not suitable for display. No potential for public focus 	<ul style="list-style-type: none"> No potential for public engagement use. No potential or research use 	Unsustainable resource required.

This page is intentionally left blank

SUBJECT: CONSULTATION RESPONSE TO THE WELSH GOVERNMENT'S DRAFT NATIONAL DEVELOPMENT FRAMEWORK

MEETING: INDIVIDUAL CABINET MEMBER DECISION – COUNCILLOR BOB GREENLAND (ENTERPRISE AND LAND USE PLANNING)

DATE: 23rd October 2019

DIVISION/WARDS AFFECTED: ALL

1. PURPOSE

- 1.1 The purpose of this report is to seek Cabinet Member agreement to the proposed consultation response to the Welsh Government's draft National Development Framework (NDF).

2. RECOMMENDATIONS

- 2.1 That the Cabinet Member for Enterprise and Land Use Planning endorses the proposed consultation response to the Welsh Government's draft National Development Framework, attached at Appendix 1.

3. KEY ISSUES

- 3.1 The Planning (Wales) Act 2015 introduced two new tiers of statutory land use Development Plan to sit above the current single tier of Development Plan, namely the Local Development Plan (LDP). These two new tiers are:
- the National Development Framework, produced by the Welsh Government and covering the whole of Wales; and
 - regional Strategic Development Plans (SDPs), which regions may choose¹ to produce and adopt. At its meeting on 19th September 2019, Council agreed to be part of the South East Wales Strategic Development Plan.
- 3.2 The Welsh Government has produced a [draft National Development Framework](#) and is consulting on it until 1st November 2019.

Why is this relevant/important?

- 3.3 Once published, the National Development Framework will directly affect the content of Monmouthshire/s Local Development Plan, and it will become a primary consideration when deciding planning applications. This is because, once published, the National Development Framework will have statutory Development Plan status. The Planning (Wales) Act 2015 requires that our Local Development Plan be in conformity with the NDF. In addition, under

¹ The production of a Statutory Development Plan is currently a choice to be made by the respective regions, although the Welsh Government has the power to require their production. However, the emerging Local Government Elections Bill may mandate SDPs.

S.38(6) of the Planning and Compulsory Purchase Act 2004, the Development Plan is the starting point for making decisions on any application for planning permission, and decisions must be in accordance with the Development Plan unless material planning considerations indicate otherwise.

- 3.4 The Welsh Government aims to publish the finalised National Development Framework in approximately September 2020². This presents something of a logistical challenge for us, because our emerging LDP must be in conformity with the NDF, the final content of which will be unknown until an advanced stage of our LDP preparation.
- 3.5 The Draft National Development Framework has a number of implications for the nation, region and our county that need careful consideration. The NDF has been written in the context of various policies and objectives, perhaps most notably the Well-being of Future Generations Act, the Welsh Government's 'Prosperity for All' agenda, its clear (and welcomed) drive to deliver more affordable housing, the Welsh Government's declaration of a climate emergency, and its ambition to strengthen the Welsh language.

Summary

- 3.6 The NDF is very light on any substance relating to the economic prosperity, investment or growth of the nation. This lack of positive ambition reflects poorly on the nation. On a regional basis, the NDF does not align with the ambition of the Cardiff Capital Region or the City Deal and does not back up the supporting text to Outcome 6;
- 3.7 The focus of growth on brownfield sites in Newport and the Valleys is not based upon any evidence of site availability or viability, in particular taking into account the success of Newport's current LDP in regenerating and redeveloping its large brownfield sites. Any focus of growth on these areas should not, and need not, be at the expense of the opportunities for other parts of the region to grow appropriately to meet their needs;
- 3.8 The ability to deliver anywhere near the scale of affordable housing sought is highly doubtful without unprecedented levels of public subsidy, in particular when development is focused on brownfield sites in Newport and the Valleys. While it is acknowledged that new delivery mechanisms are required to deliver more affordable housing, over and above the current focus on cross-subsidy by market housing developers, it must be recognised that the main house-builders make a vital contribution to affordable housing delivery that should be supplemented by, not replaced by, new measures. This requires development in a range of market areas, including those more buoyant areas like Monmouthshire and the Vale of Glamorgan. This Council could work to the Minister's ambition of developing public land with 50% affordable housing, however most of the Council's land is located within the proposed greenbelt and it would therefore be sterilised for the long term;
- 3.9 Obstructions to sustainable growth in Monmouthshire fails to address this County's very real issues centred around our ageing demography, housing supply and affordability, and the social sustainability of our communities. Ultimately, this would thwart the Council's ability to achieve its core purpose of helping to build sustainable and resilient communities and would

² The NDF will be subject to scrutiny and debate in the National Assembly for Wales prior to being 'published'. Unlike the LDP and SDP, the NDF does not have to go through an evidence-based examination to be assessed against 'tests of soundness' by an independent inspector.

frustrate the Welsh Government's aspirations to achieve sustainable development and prosperity for all. The policy wording relating to the greenbelt should be re-written to invite the Strategic Development Plans to consider if there is evidence supporting the need for a greenbelt in the region;

- 3.10 Regional connectivity should be better reflected in the SE Wales section, with a similar policy to Policy 17 provided, and the key routes for regional connectivity should be referenced and shown, namely the A465 Heads of the Valleys road and the A449/A40 road and rail from Wales to the Midlands, and the A470 link from south to north Wales;
- 3.11 The renewable energy policies should refer to the opportunities for tidal lagoon power. The region has the second highest tidal range in the world, and tidal power represents a huge opportunity for carbon neutral energy production on a very large scale.

Next Steps

- 3.6 The consultation closes on 1st November 2019, after which Welsh Government officials advise they will be putting the NDF before the National Assembly for Wales accompanied by a document of any changes that they suggest based on consultation responses. It is recommended that the response at Appendix 1 be submitted to the Welsh Government as Monmouthshire County Council's consultation response.

4. EQUALITY AND FUTURE GENERATIONS EVALUATION (INCLUDES SOCIAL JUSTICE, SAFEGUARDING AND CORPORATE PARENTING):

Sustainable Development and Equalities

- 4.1 A Future Generations evaluation has not been completed for this report because it is simply a proposed response to a Welsh Government responsibility. However, a number of the issues raised in this report are directly linked to the wellbeing of our communities and future generations, and our ability to achieve our overriding objective of helping to build sustainable and resilient communities for current and future generations. It is imperative that Monmouthshire is able to grow in a sustainable manner to address the issues facing its communities and ensure that all four aspects of sustainability: environmental, economic, social and cultural, are met. The impact of house prices, our demography and job opportunities must be addressed to ensure socially sustainable and thriving communities.

Safeguarding and Corporate Parenting

- 4.3 There are no safeguarding or corporate parenting implications arising directly from this report.

5. OPTIONS APPRAISAL

Option	Benefits	Risks	Comments
1: That MCC submits this report as a consultation response to the draft NDF	This Council's concerns are heard and considered by the Welsh Government, to hopefully amend and improve the NDF and future outcomes.	Our response doesn't result in any changes.	This is the preferred option. Any amendments or additions to the report arising from the Council workshop can be made/added as applicable.
2: Submit a fundamentally different response	This Council's views (if they are fundamentally different to those contained in this report) are heard and considered by the Welsh Government, to hopefully amend and improve the NDF and future outcomes.	Providing a fundamentally different response before the consultation deadline.	
3: Submit no response	None	Our concerns are not made known, and the NDF proceeds as drafted.	

Recommendation:

- 5.1 Based on the reasons above, Option 1 is the preferred option.

6. EVALUATION CRITERIA

- 6.1 We will know if our comments have made a difference when the final NDF is published in approximately September 2020.

7. REASONS:

- 7.1 The content of the National Development Framework significantly affects the future of our county and the communities we serve. It is important that their future opportunities are safeguarded.

8. RESOURCE IMPLICATIONS:

- 8.1 None. This report has been prepared within existing time and budget resources.

9. CONSULTEES:

- SLT
- Cabinet
- Colleagues in Planning, Countryside, Green Infrastructure and Highways

10. BACKGROUND PAPERS:

- Draft National Development Framework

- Monmouthshire adopted Local Development Plan 2011-2021 Inspector's Report of Examination

11. AUTHOR:

Mark Hand (Head of Placemaking, Housing, Highways and Flood)

12. CONTACT DETAILS:

Tel: 07773478579

Email: markhand@monmouthshire.gov.uk

Appendix 1 Draft consultation response.

Appendix 2 Plan illustrating how the indicative NDF plan appears when plotted against the current Bristol greenbelt.

Appendix 1: Consultation Response

- 1.1 Once published, the National Development Framework will directly affect the content of Monmouthshire/s Local Development Plan, and it will become a primary consideration when deciding planning applications. This is because, once published, the National Development Framework will have statutory Development Plan status. The Planning (Wales) Act 2015 requires that our Local Development Plan be in conformity with the NDF. In addition, under S.38(6) of the Planning and Compulsory Purchase Act 2004, the Development Plan is the starting point for making decisions on any application for planning permission, and decisions must be in accordance with the Development Plan unless material planning considerations indicate otherwise.
- 1.2 The timing of publication of the NDF presents something of a logistical challenge for us, because our emerging LDP must be in conformity with the NDF, the final content of which will be unknown until an advanced stage of our LDP preparation. There is a risk that our evidence-based LDP will be contradicted by the NDF, which is not evidence based, does not have to comply with the tests of soundness (which it would fail), and has not been robustly scrutinised in the same way as any other Development Plan must be.
- 1.3 The Draft National Development Framework has a number of implications for the nation, region and our county that need careful consideration. The NDF has been written in the context of various policies and objectives, perhaps most notably the Well-being of Future Generations Act, the Welsh Government's 'Prosperity for All' agenda, its clear (and welcomed) drive to deliver more affordable housing, the Welsh Government's declaration of a climate emergency, and its ambition to strengthen the Welsh language.

Outcomes:

- 1.4 The Draft NDF sets out 11 outcomes (page 18), namely that, through the NDF, we will develop a Wales where people live....
 1. and work in connected, inclusive and healthy places
 2. in vibrant rural places with access to homes, jobs and services
 3. in distinctive regions that tackle health and socio-economic inequality through sustainable growth
 4. in places with a thriving Welsh Language
 5. and work in towns and cities which are a focus and springboard for sustainable growth
 6. in places where prosperity, innovation and culture are promoted
 7. in places where travel is sustainable
 8. in places with world-class digital infrastructure
 9. in places that sustainably manage their natural resources and reduce pollution
 10. in places with biodiverse, resilient and connected ecosystems
 11. in places which are decarbonised.

1.5 It goes on to state that the 11 Outcomes can be achieved over the next 20 years if the planning system, through the NDF and other development plans, is focussed on the long-term and provides quality development in the right places for the right reasons. These Outcomes are inter-related and inter-dependent, and will improve places and well-being across Wales.

1.6 The supporting text on page 20 in relation to outcomes 2 and 6 is particularly relevant to Monmouthshire and is welcomed:

“In rural areas, job opportunities and community services will be supported to help attract and retain people. A balance will be found between development and preserving the character of rural Wales, ensuring our small towns and villages have bright futures as attractive places to live and work. There will be support for the agricultural sector and its supply chains to boost resilience through diversification.”

And

“Development Plans will have a forward thinking, positive attitude towards enabling economic development, investment and innovation. Increased prosperity and productivity will be pursued across all parts of Wales, building on current activity and promoting a culture of innovation, social partnership, entrepreneurialism and skills-development in sustainable industries and sectors. The culture, heritage and environment of Wales will play a positive, modern role in the economy by attracting the interest and expenditure of tourists, and providing a distinctive and trusted brand for Welsh businesses.”

1.7 However, with regard to Outcome 2, providing job opportunities and sustaining community services will require demographically mixed and resilient communities. Employers will be attracted by a workforce, which in turn requires housing and affordable housing that retains younger people and families. The supporting text should therefore be expanded to state that job opportunities, community services and appropriate levels of housing will be supported in rural areas.

1.8 Overall, it is considered that there is little in these broad outcome statements that many people would disagree with. Unfortunately, however, the remainder of the draft NDF does not appear to deliver on the above statements.

Levels of Growth

1.9 The draft NDF sets unambitious levels of growth for the whole nation based on projecting forwards to 2038 trends from a period of significant economic downturn. Although 50% of the housing need figure is apportioned to the SE Wales region, it is 50% of a small number. The reduced rate of household formation is used by some as evidence that less new housing is needed. Conversely, others recognise it as a symptom of unaffordable housing (perhaps combined with high levels of student debt) meaning many young people are unable to move out from their parents' home, with the solution being to increase housing supply not further constrain it.

1.10 The estimates of additional homes have been derived from the 2018-based *Estimates of Housing Need in Wales by Tenure* published by the Welsh Government in January 2019. The statistical release for the *Estimates of Housing Need* provides caveats that they are estimates based on a given set of assumptions, aimed at forming a basis for policy

decisions. It is clear that the figures in the statistical release “should not be used as housing targets,” yet there is a real danger that the inclusion of a single figure in the NDF without a full explanation of what this figure is will result in it being treated as a target.

- 1.11 To provide some context, the housing need figure suggests a total housing need for Wales to 2038 of 114,000 homes. It states that some 8,300 dwellings per annum are required in the first 5 years, of which 57% are needed in the SE Wales region. This 8,300 figure is broadly comparable to current rates of housing completions (the past completion data used in the draft NDF is known to be unreliable as it is based on incomplete Building Regulations completion certificate data). If 8,300 homes are required in each of the first 5 years, this leaves a need of just 4,800 homes per annum for the remaining 15 years for the whole nation.
- 1.12 The levels of growth indicated by the draft NDF do not depict a nation with any meaningful ambition or hope for its future. It is an inward-looking document that fails to fully consider the connections and opportunities with the south west of England. Despite the Severn Tolls being abolished to remove an economic barrier to Wales, the proposed greenbelt (see below) and the current absence of a solution to the M4 congestion in Newport, relegate the south of Monmouthshire to accommodating a ‘queue with a view’ rather than a prime gateway to Wales.
- 1.13 The remainder of the draft NDF is considered to be lacking any clear aspiration for economic growth or increased prosperity. This fails to reflect the Cardiff Capital Region City Deal and associated future opportunities, or the economic strengths associated with the Western Powerhouse or the emerging ‘Great Western Cities’ concept comprising Cardiff, Newport and Bristol. Monmouthshire is perfectly located to benefit from such initiatives, although key aspects of the draft NDF threaten to obstruct that, most notably the proposed greenbelt (see below).

Affordable Housing

- 1.14 Policy 3 emphasises the importance of publicly owned land in delivering development including for mixed use and affordable housing. This is welcomed in principle, and our Estates Department has already proactively submitted a number of candidate sites for equal consideration alongside proposals submitted by others. With all other matters being equal, the use of public land allows for a range of benefits, including securing better outcomes, potentially holding a long term interest in what is developed rather than having a short term profit-motivated approach, and the ability to recycle land sale receipts into maintaining public services. The Minister’s recent letter requires that affordable housing led sites should be promoted, if possible on public sector land, securing 50% affordable housing. The outcomes resulting from that requirement are supported, insofar as it relates to vacant or underused sites. However, it must be recognised by the Welsh Government that Councils use receipts from land disposal to deliver other strategic objectives such as the 21st Century schools programme. This is particularly the case where the Welsh Government’s settlement funding mechanisms disproportionately underfund some Councils such as Monmouthshire. An alternative funding source will be required for those other initiatives. In addition, under the Community Infrastructure Levy Regulations, CIL contributions cannot be sought from affordable housing. A much higher affordable housing requirement achieves one laudable objective but has the potential unintended consequence of significantly reducing funding towards community infrastructure. A

number of Councils apply the CIL Regulations approach to S106 agreements and do not seek education or all leisure contributions from the affordable housing element of a development.

- 1.15 While Affordable Housing supply through public sector, RSL, Council housing and support for SME builders is a laudable ambition, the NDF appears to be somewhat dismissive of the role the private sector, in particular volume house-builders, have in delivering Affordable Housing, which has been significant in the last 20 years. To achieve the ambition of delivering affordable housing, which is an essential component of social justice and the 'prosperity for all' ambition, all players must be enabled to maximise their contribution.
- 1.16 The role of the private sector in delivering affordable housing will be largely influenced by market forces such as development viability, land/build costs, developer risk and return on investment, which varies across Wales. In parts of Monmouthshire, we have been successfully securing 35% affordable housing on private sector sites, which provides a valuable contribution to our affordable housing need. In this regard, it is still important to allocate land in locations where developers want to build and where development viability is strong enough to support a strong policy requirement for increased levels of affordable housing and other necessary infrastructure.

Spatial Distribution of Growth

- 1.17 Policy 4 supports 'appropriate proportionate growth in rural towns and villages' but recognises this is best planned at regional and local levels. This is welcomed and should be based on evidence prepared at LDP level.
- 1.18 Otherwise, the draft NDF seeks to focus growth on existing town/city centres and urban areas within the nationally important growth area, in particular brownfield sites in Newport and the Valleys. The number of vacant / available sites (particularly brownfield sites) within existing settlements in the region is limited and the draft NDF's policy does not appear to be evidenced by urban capacity studies or similar. Many of these sites have been developed in recent years for housing and they are a finite resource. An over-reliance on growth within existing settlements could stifle growth within other parts of the region and undermine the delivery of the NDF and its outcomes.

New Settlements

- 1.19 Page 22 of the draft NDF states:
- "Choosing to develop new towns and enabling sprawling greenfield development would be to ignore the untapped potential of places which already have town centres, universities and colleges, public transport infrastructure and a good range of public services. It would also squander key assets in the form of productive countryside and natural resources."*
- 1.20 This would appear to rule out the opportunity to deliver sustainable growth in the longer term via the development of new settlements, in contrast to Planning Policy Wales edition 10 (PPW10) setting out the circumstances where they may be appropriate. The NDF should be amended to reflect the policy advice in PPW10 and recognise that there may be a role for new settlements if they create more sustainable places than the continued incremental growth of existing settlements. Such matters should be given detailed consideration as part of SDP and LDP strategies.

Greenbelt

1.21 The draft NDF states that:

“In South East Wales we are proposing to enhance Cardiff’s role as the capital and secure more sustainable growth in Newport and the Valleys. A green belt around Newport and eastern parts of the region will support the spatial strategy and focus development on existing cities and towns. Transport Orientated Development, using locations benefitting from mainline railway and Metro stations, will shape the approach to development across the region. There is support for the growth and development of Cardiff Airport.”

It goes onto to explicitly state that The Strategic Development Plan must identify a green belt that includes the area to the north of the M4 from the Severn Crossings to North Cardiff. The schematic plan on page 63 shows a swathe of greenbelt across the whole of the south of this County, stretching almost as far north as Monmouth. A plan is provided at **Appendix 1** illustrating how the indicative NDF plan appears when plotted against the current Bristol greenbelt.

- 1.22 Despite repeated requests to the Welsh Government to be signposted to the evidence supporting the proposed greenbelt, no response has been received at the time of writing this report. The wording proposed in relation to Policy 30 and the associated supporting text should be amended to require the SDP to consider the evidence of the need for a greenbelt.
- 1.23 A greenbelt is a permanent protective designation that should look to protect an area from development for a period of at least 50 years. Designation of a greenbelt is a major long-term policy decision that should be based on robust evidence. The implications of the greenbelt for Monmouthshire must therefore be considered in the context of several LDPs hence, not just the one currently under preparation. Discussions with Welsh Government officials suggests they may not have fully understood the permanence and restrictive nature of a greenbelt. Within a greenbelt, the only development permitted is essential accommodation for agricultural, forestry and rural enterprise workers, and essential outdoor recreation facilities. Ironically, the draft NDF text requires that the greenbelt should be considered in relation to the greenbelt around Bristol, where emerging development plans are seeking to de-designate parts of the greenbelt because it has overly constrained growth.
- 1.24 Some Members may recall that when Council considered the current adopted LDP at Deposit Plan stage, a far smaller greenbelt area than that indicated in the draft NDF was added by Members adjacent to Chepstow. This was subsequently rejected by the Planning Inspector at Plan examination. The Inspector’s report made the following pertinent comments [**my emphasis**]:

“8.11 An area of land on the western edge of Chepstow, between the town and villages of Pwllmeyric and Mathern, is designated as Green Belt in the LDP under Policy LC6. This designation would fulfil some of the purposes set out in PPW, particularly preventing coalescence, safeguarding the countryside from encroachment and protecting the setting of Chepstow. There are however other policies in the LDP which serve this purpose. Primary amongst these is Policy LC1 which presumes against new built development in the open countryside. A limited number of uses which would be appropriate in a rural

setting may be permitted as long as they would meet criteria governing their visual and environmental impact. The green wedge designation formerly applied also had the same functions as Green Belt whilst much of the land is also protected by its conservation area status.

8.12 The significant difference between Green Belt and green wedge is its permanence; Green Belt boundaries should be altered only in exceptional circumstances and land within should be protected beyond the LDP period. PPW also states that before designating land around an urban area as Green Belt the local planning authority must consider and, importantly, justify which would be the most appropriate means of protection.

8.13 Chepstow is tightly constrained by its location on the River Wye which demarcates the national boundary with England, is covered by various conservation designations (such as the SSSI and SAC) and is the basis for a C2 flood risk zone. Immediately to the north and north west of the town is the Wye Valley AONB. The demands for housing and employment development in and around Chepstow, which will be of fundamental importance to its vitality and viability, indicate that land beyond that allocated in the LDP will be needed, probably by the time of the next LDP review. The area to the west of Chepstow might be the least harmful location for such development in which case the Green Belt designation would be unduly constraining.

8.14 Furthermore, the designation does not appear to have been soundly based on a formal assessment of its contribution to urban form and the location of new development as required by PPW. That the area will have been retained as a green wedge beyond the end of the UDP period in which it was first designated is not an indication that permanence can be assured or is desirable. The Green Belt designation is therefore deleted by IMAC7. There is a need, however, for the land to be protected from development in the short term and IMAC8 restores the green wedge designation."

- 1.25 The permanence of the greenbelt and its harm to the vitality and viability of our communities was recognised by the Inspector. These reasons are equally applicable to the far larger greenbelt now proposed affecting the whole of Severnside and beyond.
- 1.26 In this context, it is worth noting that, in relation to Policy 31, the draft NDF states that "Development plans must ensure long term strategic decisions maximise opportunities in areas that will benefit from improved accessibility and investment in public transport, including from the Metro." The supporting text to Policy 28, which advocates the regional focus of growth on Newport, recognises the city's established road and rail links with Cardiff, Bristol and London. This equally applies to parts of Severnside. It is therefore vital to the social sustainability of our communities that the proposed greenbelt be wholly re-thought and properly evidence-based, and that this Council seeks to maximise the benefits from future Metro phases.

Regional connectivity

- 1.27 As drafted, the NDF ignores links to SW England and Monmouthshire's strategic location between the great western cities. The approach to regional connectivity is inconsistent between the sections on North Wales and on SE Wales. There is a specific policy (Policy

17) that states Wrexham and Deeside's role within the North region and wider cross-border areas of Cheshire West, Chester and Liverpool City Region should be maintained and enhanced. It goes on to state in the policy that *"the Welsh Government will work with cross border authorities to promote Wrexham and Deeside's strategic role and ensure key investment decisions support Wrexham and Deeside and the wider region"*. It is unclear why such an approach is not taken in the South: in fact, the draft NDF actively places obstacles in the path of maximising the economic connectivity between SE Wales and Bristol/SW England.

- 1.28 Intra-regional connectivity should also be shown between the South East Wales region and England and Mid Wales. The M4 connectivity is shown, but surprisingly (given the significant public investment and importance to the Valleys), the Heads of the Valleys route is not shown. This passes through Monmouthshire to our primary sustainable settlement of Abergavenny and on to the Midlands and Herefordshire, and west towards Neath Port Talbot, which is identified as a regional growth area in the draft NDF. In addition, the mid Wales plan shows the A470 connectivity southwards to be important, but this is not reflected in the plan for SE Wales: the A470 link should be shown northwards from Merthyr Tydfil. The A449/A40 also provides a key regional route linking to the M50 and should be shown.

Renewable energy

- 1.29 The draft NDF proposes a traffic light policy approach. National Parks and AONBs are red, and large scale renewable energy will not be permitted in these areas. The draft NDF identifies a number of (evidence based) areas for strategic renewable energy, where the policy support for renewables will take priority. Within the remaining amber areas, large scale renewable energy will be supported subject to usual landscape etc policies. Monmouthshire is within amber and red zones (the latter being the AONB and Brecon Beacons National Park). The policy clarity is welcomed. The amber rating for the majority of our county need not obstruct the Council's commitment to renewable energy and to delivering a second solar farm, provided our landscape etc policies are worded and applied appropriately and the proposal is suitably located.
- 1.30 The draft NDF is silent on the potential for tidal lagoons, which is a significant missed opportunity.

Conformity

- 1.31 The Development Plan system is predicated upon an evidence base that demonstrates the viability and deliverability of its proposals. There is no such evidence to support the NDF outcomes or to demonstrate they are deliverable. The NDF is setting outcomes that SDPs and LDPs will need to conform to and prove through examination that they are deliverable, based on robust evidence. This could lead to conflict between the NDF and the evidence-based SDPs and LDPs that could seriously hamper development plan preparation and undermine the plan led system.

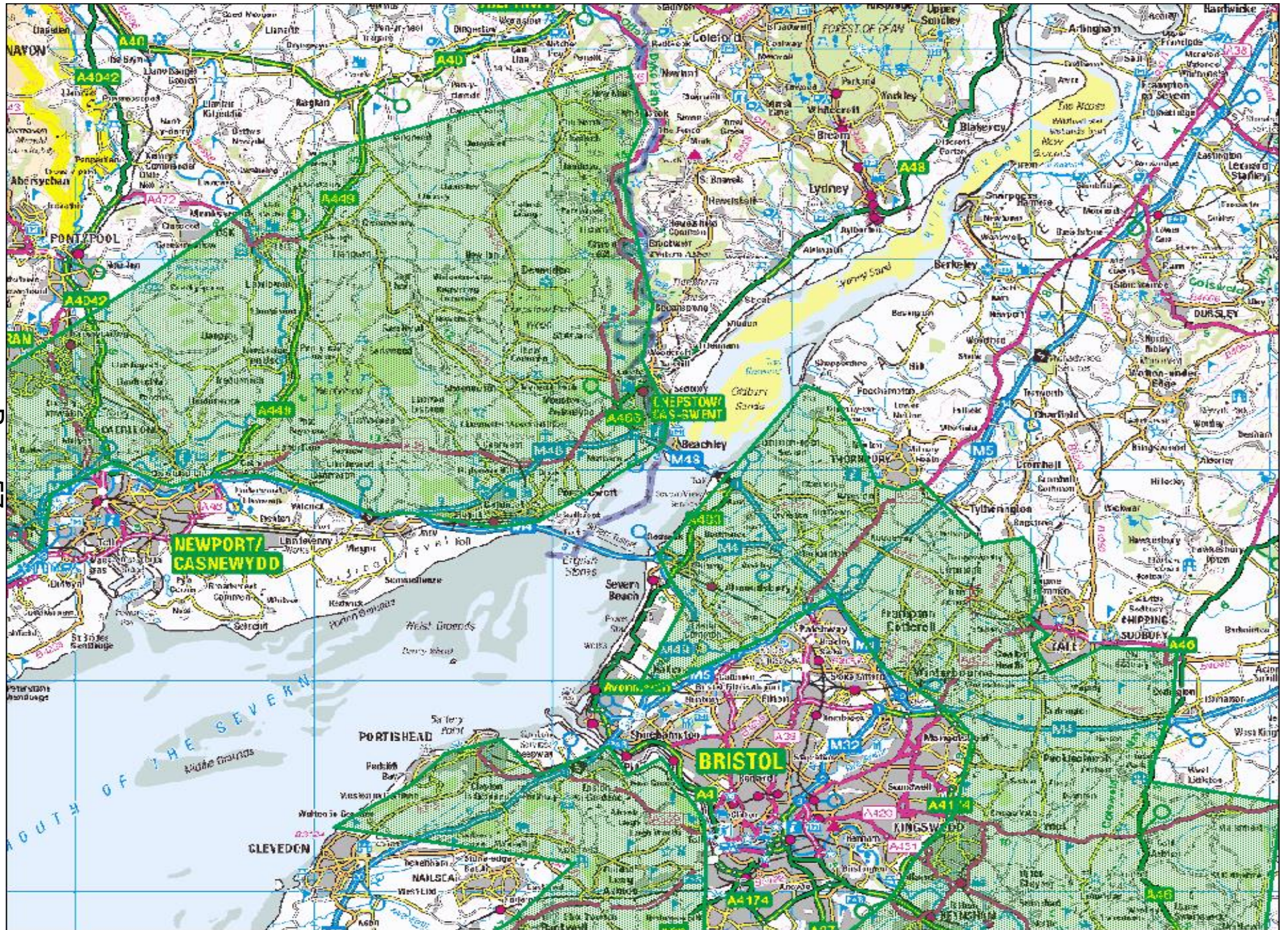
In conclusion:

- 1) The NDF is very light on any substance relating to the economic prosperity, investment or growth of the nation. This lack of positive ambition reflects poorly on the nation. On

- a regional basis, the NDF does not align with the ambition of the Cardiff Capital Region or the City Deal and does not back up the supporting text to Outcome 6;
- 2) The focus of growth on brownfield sites in Newport and the Valleys is not based upon any evidence of site availability or viability, in particular taking into account the success of Newport's current LDP in regenerating and redeveloping its large brownfield sites. Any focus of growth on these areas should not, and need not, be at the expense of the opportunities for other parts of the region to grow appropriately to meet their needs;
 - 3) The ability to deliver anywhere near the scale of affordable housing sought is highly doubtful without unprecedented levels of public subsidy, in particular when development is focused on brownfield sites in Newport and the Valleys. While it is acknowledged that new delivery mechanisms are required to deliver more affordable housing, over and above the current focus on cross-subsidy by market housing developers, it must be recognised that the main house-builders make a vital contribution to affordable housing delivery that should be supplemented by, not replaced by, new measures. This requires development in a range of market areas, including those more buoyant areas like Monmouthshire and the Vale of Glamorgan. This Council could work to the Minister's ambition of developing public land with 50% affordable housing, however most of the Council's land is located within the proposed greenbelt and it would therefore be sterilised for the long term;
 - 4) Obstructions to sustainable growth in Monmouthshire fails to address this County's very real issues centred around our ageing demography, housing supply and affordability, and the social sustainability of our communities. Ultimately, this would thwart the Council's ability to achieve its core purpose of helping to build sustainable and resilient communities. The policy wording relating to the greenbelt should be re-written to invite the Strategic Development Plans to consider if there is evidence supporting the need for a greenbelt in the region;
 - 5) Regional connectivity should be better reflected in the SE Wales section, with a similar policy to Policy 17 provided, and the key routes for regional connectivity should be referenced and shown, namely the A465 Heads of the Valleys road and the A449/A40 road and rail from Wales to the Midlands, and the A470 link from south to north Wales.
 - 6) The renewable energy policies should refer to the opportunities for tidal lagoon power. The region has the second highest tidal range in the world, and tidal power represents a huge opportunity for carbon neutral energy production on a very large scale.

As currently drafted, Monmouthshire County Council cannot support the National Development Framework

This page is intentionally left blank



This page is intentionally left blank